


Partial Discharge
Diagnosis ■ Monitoring
Quality Control ■ R&D

Megger[®]



Quality instruments
and engineering
services for medium
and high voltage
diagnostic applications

EN
ENGLISH

Megger Aachen PD

ABOUT MEGGER AACHEN PD

Megger Aachen PD provides quality instruments and engineering services for high voltage diagnostic applications. The company has built a solid reputation since market introduction of our partial discharge detectors in early 1993. The ICM series of digital partial discharge detectors is used for evaluation of electrical insulation by electric utilities, manufacturers, and research institutes worldwide.

In addition to digital partial discharge detectors and monitoring systems, Megger Aachen PD produces instruments for commissioning tests of GIS systems, automated control of high voltage tests, fibre optic connections for analogue signal transmission between instruments and sensors, and for other applications in high voltage. All of our instruments and specialised software products are developed in Aachen, Germany. The company's principal engineers are active in several scientific committees.

At Megger Aachen PD we understand that keeping the power on is essential for the success of your business. That is why we are dedicated to creating, designing and manufacturing safe, reliable, easy-to-use portable test equipment and professional technical services backed by world-leading support and expertise.

We can assist your acceptance, commissioning and maintenance testing for predictive, diagnostic or routine purposes. By working closely with electrical utilities, standards bodies and technical institutions, we contribute to the dependability and advancement of the electrical supply industry.

Our engineers actively participate in regulars' committees, meetings with all the big trade associations around the world, training organisations and government organisations, to understand the needs of electrical contractors. So, when new legislation or rules are introduced, you can count on Megger Aachen PD to put your interests first, because Megger products and services help customers all over the world, improving their efficiency, reducing costs, and meeting standards. It operates globally, with dedicated field sales teams and distributors located all over the world.

We are certified according to ISO 9001:2015, ISO 14001:2015, and ISO 45001:2018. We offer full service, repair, and calibration service accredited to ISO 17025:2018.



Product selection guide	4	PD accessories	
Product applications		Sensors	34
Transformers	6	Quadrupoles and isolation transformers	35
Rotating machines	8	Coupling capacitors	36
Cables	10	Bushing accessories	38
PD monitoring systems		Pre-amplifiers	40
ICMmonitor	12	Current transformers	42
ICMmonitor Portable	14	Miscellaneous	44
GISmonitor Portable	16	Special software	46
PD measurement devices		Services	47
ICMcompact	17		
ICMsystem Generation 5	18		
ICMflex	20		
ICMflex GRC	21		
AICompact	22		
Loss factor measurement			
TDCompact	23		
Fibre optic transmission systems			
FOS1, FOS2, FOS3	24		
FOS4	26		
Calibrators			
CAL1, CAL2, CAL3 series	27		
RIV measurement devices			
RIVmeter	28		
Test and automation			
HVcompact	29		
STEPcompact	30		
HVcontrol	31		
Special instruments			
PRPDreplay	32		
ATTanalyzer	33		

PRODUCT SELECTION GUIDE FOR PD MEASUREMENT PRODUCTS

ICMsystem Gen. 5

ICMcompact

AIACompact



GENERAL DESCRIPTION		Modular partial discharge measurement system	Stand-alone partial discharge detector	Acoustic and UHF PD analyser
		Sync. range: 20–510 Hz (autom.) / 0.02–510 Hz (man.)	Sync. range: 6–505 Hz/ VLF (0.02/0.05/0.1 Hz)	Sync. range: 10–520 Hz
MAIN APPLICATION	Transformers	■	■	
	Rotating machines	■	■	
	GIS	■	■	■
	AIS	■	■	
	Cables	■	■	
	Other components	■	■	
USAGE	Factory acceptance tests	■	■	
	On-site off-line test	■	■	■
	On-site on-line test	■	■	■
	On-line monitoring			
PD MEASUREMENTS	HF IEC	■	■	
	HF VHF	■	■	■
	UHF	■		■
	Acoustic	■		■
SPECIAL FEATURES	Time domain reflectometry	■	■	
	DC recording	■		
	Time of flight			■
	Spectrum analysis	■	■	
	RIV measurement	■	■	
TAN DELTA				
EXT. SYNC. VOLTAGE MEASUREMENT		■	■	
NO. OF CHANNELS	Multiplex		4 / 12	4 / 12
	Simultaneous	1 to 10		
OPERATION	without PC		■	■
	with PC	■	■	■
INTERFACES	USB	■	■	■
	Bluetooth		■	
	LAN	■	■	
	GPIB	■		
ENCLOSURE	Desktop enclosure	■	■	■
	Explorer case		■	■
	Rack mountable		■	
	Hat rail mountable			
PAGE NUMBER		18 and 19	17	22



ICMflex	ICMflex GRC	ICMmonitor	GISmonitor
---------	-------------	------------	------------



Partial discharge and Tan Delta measurement system Sync. range: 20 Hz–510 Hz/ VLF (0.02/0.05/0.1 Hz)	Partial discharge and IEC 60034-27-3 tan delta measurement device Sync. range: 20 Hz–510 Hz/ VLF (0.02/0.05/0.1 Hz)	Partial discharge monitoring system Sync. range: 8–320 Hz	Partial discharge monitoring system for GIS Sync. range: 20–350 Hz
■		■	
	■	■	
		■	■
■		■	
■	■		
■	■	■	
■		■	
		■	
		■	■
■	■	■	
		■	
		■	■
■			
			■
		■	
■	■		
■			■
1	1	4 / 8	8 / 16 / 24 / 32 / 40
■	■	■	■
■	■	■	■
		■	■
		■	■
		■	■
		■	■
		■	■
		■	■
20	21	12 to 14	15 and 16

Product application

Transformers



Product application

Transformers

Partial discharge (PD) measurements on power and distribution transformers are a proven tool to identify and locate insulation defects within windings, instrument transformers, bushings, tap changers, or other accessories. Besides providing the required equipment for factory acceptance tests (FAT), Megger offers a wide range of instruments for on-site investigations and for continuous on-line monitoring. Such off-line or on-line measurements in the field serve as an in-depth verification of an initial trigger by a PD monitoring system or suspicious dissolved gas analysis results and can provide essential information about ongoing deterioration of components of the active part and bushings. Currently, off-line PD testing in the field after commissioning of new units is an emerging trend and already proved to be very effective to detect assembling or processing deficiencies. Nowadays the permanent PD surveillance of transformers in the grid is a proven technology to prevent unforeseen outages and irreparable damage. Accurate monitoring of phase resolved PD patterns and alarm thresholds is essential in order to avoid a breakdown or system failure. With the *ICMmonitor*, Megger provides such compact, stand-alone and remotely accessible continuous monitoring system for power transformers offering accurate alarm functionality with consequent pre-warning messages to prevent worst case scenarios.



ICMsystem with nine channels

The multi-channel *ICMsystem* Gen. 5 greatly simplifies the PD acceptance tests on large power transformers. With its true parallel PD acquisition on up to ten channels, the overall testing period is substantially shortened by features such as the automatic calibration cross coupling matrix. A typical package for advanced PD analysis consists of a multi-channel *ICMsystem* offering narrow and wide band PD pattern acquisition according to IEC 60270. The instrument comes with an embedded spectrum analyser for PD analysis in frequency domain. Moreover, it is an excellent tool to use in case of noisy test environments. The embedded digital storage oscilloscope (DSO) enables time domain analysis of electrical and acoustic signals. The *ICMsystem* software further offers direct transmission of acoustic time domain measurements to the *ICMacoustic* PD location software, providing an accurate graphical and mathematical triangulation functionality to locate PD defects in the main tank with high precision.

The *ICMcompact* with SPEC option is a good compromise for routine factory PD testing of distribution class transformers and instrument transformers. Its user friendly interface enables non-PD-experts to efficiently handle factory acceptance testing. The embedded 40 kHz to 10 MHz spectrum analyser and effective noise gating features are excellent tools to cope with noisy factory environments. In addition to the noise suppression functions of the instruments, Megger offers a wide range of high voltage filters for induced or applied voltage testing.

PD MONITORING

Partial discharge monitoring has become increasingly important in the past few years. Besides other parameters, such as dissolved gas analysis, temperatures, vibrations, or load conditions, etc., the PD trending information completes a full set of monitoring data of a power transformer in the field. A wide range of standard bushing adapters (BA) is available to connect the measurement system to the capacitive tap of condenser bushings. Even special designs are available on request. Additionally, the standard setup using the bushing test tap could be extended with UHF drain valve sensors or embedded antennas in flanges. A good alternative for continuous monitoring are periodical on-line PD measurements using an *ICMsystem* or *ICMmonitor* Portable. In such case, signal decoupling can be done by either temporary installed measuring impedances or a permanent setup with bushing adapters (BA) and bushing coupling units (BCU).

TYPICAL PACKAGE

Set for power transformer acceptance testing:

- 1 x *ICMsystem* Gen. 5
- 1 x Built-in TCP/IP interface
- 1 x GPIB interface
- 1 x Software *ICMsystem* Gen. 5
- 1 x Impulse calibrator CAL1D or CAL1B
- 9 x Pre-amplifier RPA1 or RPA1L
- 8 x Quadropole CIL4M/V0 μ 5/2 μ 0
- 3 x Quadropole CIL5M/V4 μ 0
- 3x T100/100 high voltage filter

Product application

Rotating machines



Product application

Rotating machines

The epoxy mica stator winding insulation of rotating machines is a 'forgiving' insulation system. Due its dielectric stability, partial discharge activity acts as an indicator for a variety of defect mechanisms. Besides the normal thermal ageing, further problems, such as end winding contamination, bar or overhang vibrations, deterioration of grading layers, loose wedges, or large internal delaminations are common and can be classified by analysis of the phase resolved pattern properties. Partial discharge testing and monitoring on generators and large motors offers a detailed stator winding condition assessment. This helps avoiding unplanned outages as well as scheduling efficient maintenance turn intervals.

PD MEASUREMENTS

Megger offers various instruments for continuous monitoring, schedule-based routine testing and in-depth analysis of rotating machinery. The instruments and their control software were continuously improved based on the feedback and requirements of the end users. Permanently installed partial discharge couplers greatly simplify periodical on-line testing using the ICMsystem without any interruption or downtime. Continuous on-line PD monitoring with a permanently installed ICMmonitor helps optimizing maintenance intervals and reducing costs, while improving the level of equipment reliability.



ICMsystem Gen. 5

PARTIAL DISCHARGE MONITORING

Based on the stand-alone ICMmonitor unit connected to an individual machine, larger networks supervising a multitude of generators in combined-cycle thermal power plants or pump-storage hydro power plants have been realised. Such networks include full control of the local instrument via global Intranet access as well as visualisation of the monitoring data in monitoring centres. The ICMmonitor software offers automated scanning, pattern acquisition, and analysis of the trending data, while the ICMserver software operates in the background to supervise the communication between the individual instruments and data servers.



ICMmonitor Portable

LARGE MOTORS

High voltage motors are the main assets to keep compressors, cooling pumps, extruders and large fans running in refineries, oil and gas plants, chemical and petrochemical industry. Here, unplanned outages can cause immense losses. Not only for the HV motor in particular, but to clean pipelines with remaining product or compressors and extruders that have stalled by motor failure. Further, such motors act as auxiliary drives in thermal and nuclear power plants to run the (emergency) cooling system, for example. Here, failure of the stator winding can cause critical subsequent damage. Given the typical 5-yearly outages for such setups, permanent installation of capacitive couplers offers periodical on-line PD measurements, and, hence, the possibility for an accurate and short follow-up. For the most critical trains, continuous monitoring can be installed from the early beginning.

TYPICAL PACKAGES

Advanced PD measurement system (off-line and on-line):

- 1 x ICMsystem Gen. 5 (incl. spectrum analysis option)
- 1 x ICMsystem software
- 1 x GPIB interface
- 2 x Pre-amplifier RPA1H
- 1 x Pre-amplifier RPA2 (for on-line testing)
- 1 x High frequency current transformer CT1 or CT100 (opt.)
- 1 x Impulse calibrator CAL1B
- 1 x Set of cables
- 1 x Off-line coupling capacitor, e.g., CC25B/V

Standard PD test system (off-line):

- 1 x ICMcompact (opt. MUX4 and gating)
- 1 x ICMcompact software
- 1 x Preamplifier RPA1 or RPA1e
- 1 x Impulse calibrator CAL1B
- 1 x Set of cables
- 1 x Off-line coupling capacitor, e.g., CC25B/V

Combined PD and TD measurement equipment (off-line):

- 1 x ICMflex incl. software
- 1 x Impulse calibrator CAL1B
- 1 x Set of cables

Product application Cables



Polyethylene is a 'non-forgiving' insulation system. Thus, close attention must be paid to partial discharge activity during factory testing, commissioning, and service. On-site measurement techniques have to cover the needs of an aging polymeric cable distribution net as well as an increasing application of polyethylene extra high voltage cables.

Combining the ICM*flex* or the lightweight ICM*compact* for partial discharge location with portable VLF high voltage sources or variable frequency resonant test sets offers cost-effective survey testing of a distribution grid.

EXTRA HIGH VOLTAGE CABLES

Cables are generally factory-tested. The accessories of high voltage (HV) and extra high voltage (EHV) cables are usually also pre-tested. However, mechanical forces during the laying, hidden imperfections, and flaws caused by improper handling, for instance, require partial discharge commissioning tests.

Ideally, the cable accessories of such transmission-class cables are equipped with embedded sensors. Megger introduced this cost-effective principle in 1994 and numerous cable manufacturers have implemented it since then. The ICM*system*, especially if enhanced with the FO*system* for optical isolation, offers powerful tools for the analysis of the cable insulation system.

Additionally, different pre-amplifiers and embedded or external spectrum analysers complete the instrumentation.

MEDIUM VOLTAGE CABLES

As with HV and EHV cables, the ICM*compact* is used for shopfloor production testing on medium voltage cables, and ICM*flex* applications include HV/MV cable acceptance testing, MV/HV cable on-site testing and cable joints and accessories (laboratory/on-site). During the past decade numerous cable manufacturers have changed to this instrument during the modernisation of their test room. A large population of service-aged medium voltage or distribution-class cables has reached their projected service life, as polymeric cables were increasingly introduced since the 1970s. The ICM*compact* is available in a ready-to-use package for field testing and partial discharge location with any external high voltage source. Especially the combination with very low frequency (VLF) sources and the combination with variable frequency resonant test sets provide lightweight and cost-effective solutions to keep the distribution grid reliable. The package includes a combination of T-filter and coupling unit to reduce the high frequent disturbance signals from the HV source.

SPECIAL SENSORS

Coupling capacitors, as used for factory testing and for off-line testing, are not applicable for on-line testing. Megger offers several types of external sensors for PD measurements. The differential foil sensor (DFS) makes use of the stray capacitance of cross-bonding joints and offers comparable low-noise measurements at higher frequencies. The CT100 is a clamp-on HF current transformer that can be used to pick up partial discharge signals on ground leads and on cross-bonding connections.

Further sensors including Rogowski coils can be tailor-made for any application. Megger also assists with the design and implementation of embedded sensors.

PD MONITORING

Generally, partial discharge monitoring can take care of any high voltage insulation system to detect incipient breakdown and on-going degradation.

The defect mechanisms for cable accessories and for the cable itself differ due to different material properties, for example. When monitoring EHV cables systems, a comparable long pre-warning time applies to EPR and EPDM accessories, while the cable insulation of a 400 kV XLPE cable, for instance, has a much shorter pre-warning time.

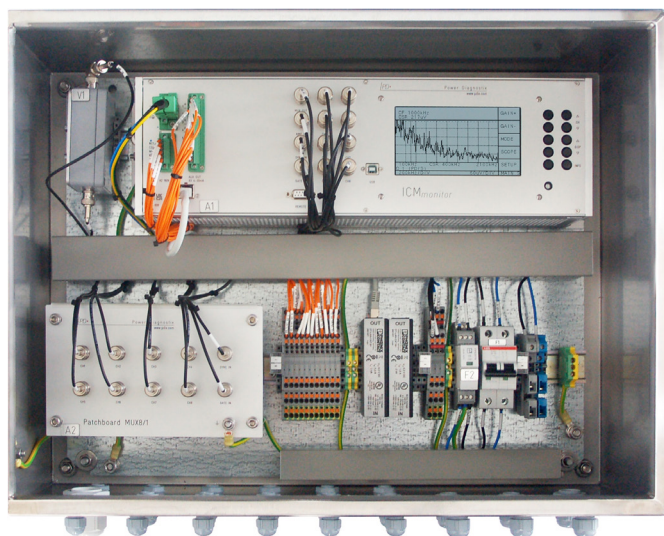
TYPICAL PACKAGE

Mobile PD fault location system:

- 1 x Portable ICM*compact* with built-in DSO board
- 1 x Software ICM*compact* with PD fault location
- 1 x Coupling capacitor CC25D/V or CC100D/V
- 1 x Optional high voltage T-filter
- 1 x Impulse calibrator CAL1B
- 1 x Pre-amplifier RPA1L
- 1 x Pre-amplifier RPA1
- 1 x Set of cables



ICMmonitor Partial discharge monitoring system

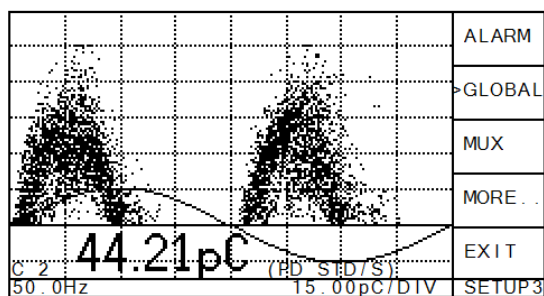


The ICMmonitor is a partial discharge analyser comprising a spectrum analyser, an acoustic detector, and a conventional partial discharge (PD) monitor in one instrument. This combination enables PD measurements even with a large background noise, e.g., on power transformers within substations or power plants. This monitoring system for fixed indoor or outdoor installation is used principally for permanent, continuous on-line monitoring of rotating machines, cable systems, and power transformers.

The multifunctional ICMmonitor, with its embedded display, convenient trending, and settable alarms, is an ideal solution for the permanent survey of electric devices in industrial and utility applications.

EMBEDDED DISPLAY

The ICMmonitor has an easy-to-use push-button interface to navigate on-screen menus displayed on an embedded LCD panel. The LCD modes include a monochrome phase-resolved PD pattern display for classification of defects, a scope-like display showing charge pulses as a vertical line at the phase angle where they occur, a time trending display, and a monitoring display showing bar graphs of two key partial discharge quantities (Qp and NQS). Qp is the apparent charge value of the PD activity, and NQS is the absolute discharge current obtained by integrating the discharge values (summing up the total charge measured and dividing by the time interval, $Q/t = [As]/[s]$).



Monochrome PD pattern display

REMOTE MONITORING

With its built-in TCP/IP interface, the instrument can be controlled and observed remotely over an Internet connection anywhere in the world. An optional mobile communication interface (MCI2) enables remote access via UMTS. Optionally, if a monitored system exceeds an alarm level set by the user, the ICMmonitor can place a call to a user-selected number.

SPECTRUM ANALYSIS

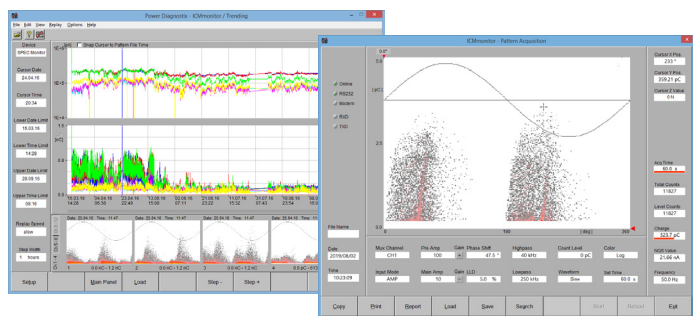
Observing the frequency spectrum of a harshly disturbed PD signal allows the selection of frequency bands with fewer disturbances. Using this centre frequency for a PD acquisition, gives a largely improved signal-to-noise ratio resulting in a clear pattern acquisition. The combination of spectrum analyser and PD detector within one instrument greatly expands the measurement possibilities when analysing the insulation systems in a noisy environment.

The ICMmonitor with spectrum analysis comes with a four- or eight-channel multiplexer to directly select the input signal. The instrument provides five different display modes as well as a variety of connectivity options, including TCP/IP and USB.

ICMmonitor SOFTWARE

The ICMmonitor can be connected to a computer via serial interface or TCP/IP. Special software allows the remote control of the instrument and the download of the stored data, such as instrument setups, NQS and Qp values, alarm events, projection data, and coloured PD pattern.

An auto-scan function takes the trending information as well as the phase-resolved pattern of one or multiple units.



ICMmonitor Partial discharge monitoring system

EXPANDABILITY

The ICMmonitor can be equipped with several optional features to adapt the instrument for special acquisition tasks or to easily integrate it into third-party assets.

MUX8/MUX12

- 8 or 12 input channels for PD and synchronisation signals.

IEC61850 HW interface

- OS independent hardware based communication gateway
- Provision of ICDs for third-party data integration
- Full description of all data sets and IEC 61850 relevant documents
- Provided data sets: E.g., current readings of NQS, Qp, alarm status



AUXOUT4/AUXOUT8

- Up to eight additional output signals of 4–20 mA or 0–10 V DC can be provided for external monitoring purposes

AUXIN4/AUXIN6/AUXIN8

- Up to eight additional sensor signals of 4 to 20 mA or 0 to 10 V DC can be measured and recorded.

PDMAR500

- Compact design
- Built-in ICMmonitor, CTB, network interface, IOs, main switch,...
- User-friendly interface
- Corrosion proved design
- High quality PTFE coaxial cables suited for extreme weather conditions on-site
- Heating installation or cooling system possible
- Stainless steel enclosure with protection class IP52



ICMoutlander

- Dust- and watertight Explorer case with Ingress protection class IP65

ICMexpert

- Advanced data management
- Database-supported handling of all measurement files
- Supplementary information
- PD pattern comparison
- PD pattern classification
- Storage of photos, comments, and all instrument settings with each data set

Web-based data access and visualisation MWS

The mobile web server MWS offers a web interface for convenient set up of monitoring parameters and handling of collected data from anywhere in your network. The instrument's event log and corresponding PD data can be instantly visualised and analysed remotely.



- OS independent
- Direct access via local IP address
- Full description of API
- Access to specified data sets provided by the instrument
- Data can be stored to external database with 64 GB capacity



ICMmonitor Portable

Portable PD monitoring device



The ICMmonitor Portable is part of the Megger ICM series of digital partial discharge detectors. It is a compact, stand-alone instrument for evaluating the condition of medium and high voltage insulation. A built-in four- or eight-channel multiplexer offers scanning of three-phase systems or multiple sensors.

The ICMmonitor Portable is an autonomous instrument, which can be used as stand-alone monitoring device. However, it is equipped with a serial computer interface for download of trending data and remote access, e.g., by LAN network (TCP/IP). The system can be adapted to utilise all commonly used types of couplers and sensors.

VERSATILITY

A broad range of standard accessories is available to adapt the test set-up to specific customer needs, e.g., bushing adapters and bushing coupling units for permanent installation connect the ICMmonitor Portable to the test tap of transformer condenser bushings, and different types of coupling capacitors in combination with coupling terminations boxes serve for monitoring of large motors.



ALARMS AND TRENDING

Users can set alarm levels of the apparent charge value of the PD activity (Qp) or the absolute discharge current (NQS) that will trigger when those values are exceeded. A triggered alarm will appear on the LCD and activate an output relay on the ICMmonitor Portable, that can be used to drive a local alarm system. The instrument also collects and displays PD data over a specified time interval for easy trending and observations of changes in the Qp and NQS levels in the monitored system. Optionally, up to eight DC signals, such as temperature or load, can be added to this trending.

NOISE REJECTION

The ICMmonitor Portable features various noise handling techniques. The noise gating module can be connected to an antenna or a current transformer to sense and remove noise without losing significant PD data. Another method available is simple windowing that suppresses phase-stable pulses occurring in the defined windows. Additionally, an appropriate choice of external pre-amplifiers can limit PD acquisition to a frequency band with less background noise.

DISPLAY MODES

SPEC

The spectrum display shows the frequency spectrum of the input signal up to 10 MHz. Three traces for the current input channel allow storing, comparing and processing of this spectrum. The bandwidth of the demodulated signal can be set to 9 kHz or 270 kHz, respectively.

SCOPE

The SCOPE mode displays the PD pattern versus phase as known from the ICM series. Hereby, the selected centre frequency and bandwidth of the SPEC mode is used, in order to disregard frequency ranges occupied with disturbances.

MON

The monitoring display allows setting alarm levels of NQS or Qp that will trigger when those values are exceeded.

PROJ

The projection display mode PROJ shows the amplitude distribution graph of the measured PD pulses. This distribution graph reveals the contribution of each charge amplitude to the overall discharge current (NQS).

TIME

Additionally, the ICMmonitor Portable collects and displays PD data over a specified time interval for easy trending and observations of changes in the Qp and NQS levels of the monitored system.

Partial discharge monitoring on GIS

The GISmonitor builds on more than 20 years of experience in on-line PD monitoring on rotating machines, transformers, cables, and especially GIS systems. It combines proven technology of the ICMmonitor with new processor technology and embedded hardware capabilities. The hardware core of the system has been optimised for parallel, real time PD acquisition on multiple channels. Any UHF signal can be detected and digitised within micro seconds. A separation of PD events from external disturbances or internal switching pulses is calculated in real time and, therefore, an effective PD and alarm detection is given. Each eight-channel acquisition plug-in board operates fully stand alone, but can be combined with a virtually unlimited number of units, to monitor all PD sensors in one or even multiple GIS in parallel. A partial discharge monitoring acquisition rack (PDMAR) carries up to 15 plug-in boards – each with eight channels – providing up to 120 channels. An industrial type PC installed in a partial discharge monitoring control rack (PDMCR) reads all data of the instruments via the high speed fibre optic LAN ring, providing communication redundancy. Storage redundancy is provided due to a RAID controller and data mirroring on multiple drives. Each cabinet comes with an uninterruptible power supply, a network switch and temperature controlled cooling and heating. Cabinets for indoor applications feature a protection class of IP54, while cabinets for outdoor applications reach a protection class of IP65.



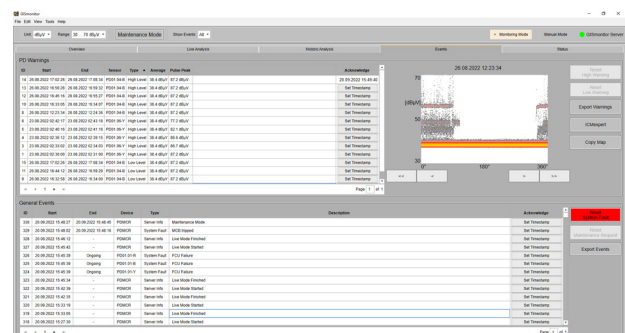
FEATURES

- Parallel UHF PD measurement on all channels
- Parallel reading of PD peak values, PD scope amplitudes, and PD patterns
- Separate gating input channel
- Automatic alarm detection algorithm
- System redundancy
- Suitable for embedded and external retrofit UHF sensors
- Scalable system configuration
- Automatic noise suppression mode
- Network-based communication

The GISmonitor is designed to suit all currently available UHF sensors for GIS PD monitoring. This includes embedded and external retrofit UHF sensors. A special input protection unit (IPU2) blocks strong transients (VFT). The pre-processing unit FCU2 de-modulates UHF signals into a lower frequency band. These lower frequency signals can be transmitted by coaxial cables and allow a compact and centralised design of the system. The user interface software panel of the GISmonitor monitoring system is installed on the local industrial PC and can be installed additionally on any remote computer for data evaluation and diagnosis. The graphical user interface is customised for each system and provides a user friendly overview of the current system status.

SOFTWARE FEATURES

- User friendly software panel including a customised GIS overview diagram indicating all sensors and its current activities
- Additional analysis and trending panel displaying U_{pp} , U_{pavg} , scope, and pattern information of each channel at every time stamp
- Alarm event list indicating peak levels, PD patterns and trend information
- PD trending and PD pattern information of the full history
- Typical PD failure database
- Automatic data storage
- Interface to third party control systems, such as SCADA and IEC 61850.



GISmonitor software



GISmonitor Portable

Partial discharge monitoring on GIS



This GISmonitor Portable is a portable unit for temporary monitoring of partial discharge activity on gas-insulated switchgear (GIS) caused by hopping particles, floating potentials, cracks in insulators or spacers, or other degradation in the insulation system.

The instrument offers parallel real-time PD acquisition on up to 40 channels. To eliminate disturbance signals from the measurement, the instrument can be connected to a disturbance antenna that provides a gating signal.

MEASURING PRINCIPLE

Partial discharge measurements can be easily applied on gas-insulated switchgear without the need of interrupting the operation. Such on-line measurements help to identify internal imperfections of the insulation system, which may lead to breakdown and system failure in the future.

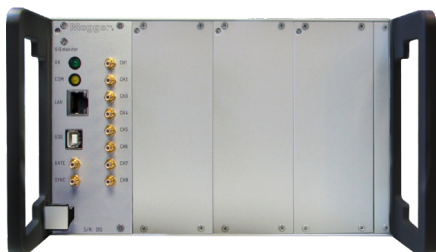
Due to the dielectric properties of the SF6 gas, partial discharge activity in gas insulated switchgear covers a bandwidth of well beyond two GHz. The mechanical properties of the components of gas insulated switchgear further allow transmission of such signals over a distance of a couple of metres. Thus, the partial discharge monitoring of GIS equipment is done preferably in the UHF range.

SENSORS

The GISmonitor Portable is designed to suit all currently available UHF sensors for GIS PD monitoring. This includes embedded and external retrofit UHF sensors. A special input protection unit (IPU2) blocks strong transients (VFT). The preprocessing unit FCU2 demodulates UHF signals into a lower frequency band for easy submission over longer distances.

ENCLOSURE MODELS

The instrument is available with different housings: Portable, lightweight desktop enclosures of half 19 inch and 19 inch as well as shock resistant and watertight outdoor cases.



GISmonitor Portable as desktop version

SOFTWARE

The instrument can be connected to a PC or laptop via a USB or an optional LAN interface for data evaluation and diagnosis with the GISmonitor Portable software. The service program visualises the current readings of the partial discharge sensors of a GIS in parallel. Each sensor is linked with a specific input channel of the GISmonitor Portable.

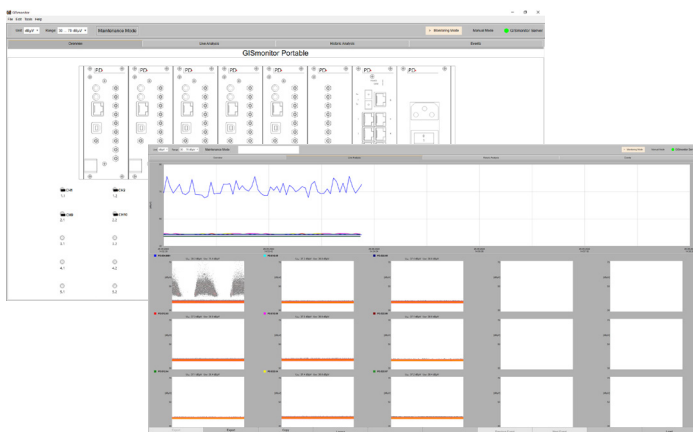
Monitoring mode

The acquisition of partial discharge pulses is done versus phase position. The external or internal synchronisation signal determines the phase position of every PD pulse. The Live Analysis panel in this mode shows the partial discharge activity of up to 15 channels in parallel. A trending graph depicts the average and pulse peak values of all selected sensors.

Manual mode

For commissioning purposes, the GISmonitor software offers a special commissioning display, which shows relevant data in three different modes: A view for normal operation, a view for HV tests, and a view to perform the sensitivity verification.

Every version of the GISmonitor Portable can also be used with the software of the non-portable GISmonitor systems.



GISmonitor Portable software



Digital partial discharge detector

The ICMcompact is a compact, stand-alone instrument for evaluating the condition of medium and high voltage insulation. The ICMcompact is often used in quality assurance and quality control tests in manufacturing, but the instrument may be adapted to non-conventional testing tasks, such as field testing and diagnostics by use of various pre-amplifier and couplers.

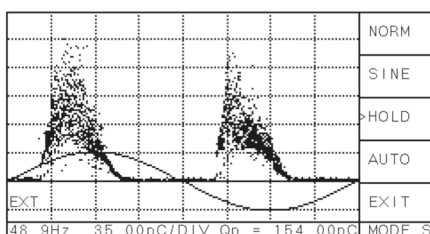
The easy portability, simple operation, and flexibility of the ICMcompact make it a good choice for routine PD testing in a variety of utility and industrial applications.



STAND-ALONE INSTRUMENT

The Megger ICMcompact provides a simple push-button interface and on-screen menus in an embedded LCD panel. The LC display modes include a simple PD charge meter with adjustable 'needle' sensitivity, monochrome phase-resolved PD patterns for classification of defects, and a scope-like display showing phase-summed charge pulses superimposed with a sine wave.

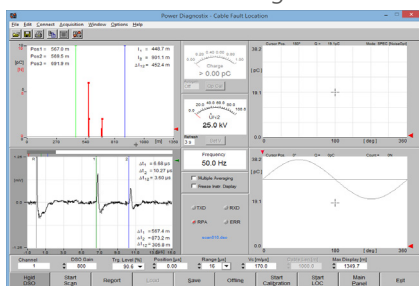
Although the ICMcompact is an autonomous unit, it can be connected to a computer installed with Megger software to capture screenshots or to implement remote control of the unit.



Phase-resolved PD pattern

CABLE FAULT LOCATION

An optional DSO board can be used to locate partial discharge defects in power cables using time domain reflectometry. The board allows sampling PD pulses and its reflections running over HV cables for cable fault location. The sample rate of this DSO function is 100 MSamples and gives a resolution of ten ns. An additional display mode with cursor settings and zoom functions helps to localise faults directly on-site. Advanced software gives more possibilities for evaluation and precise fault location using a PC or laptop.

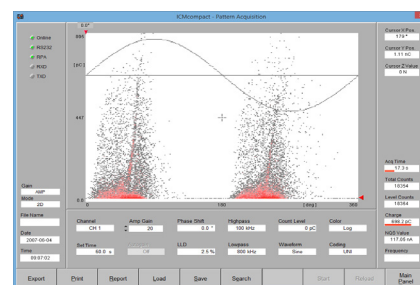


Software panel for cable fault location

PD SPECTRUM ANALYSIS OPTION

Observing the frequency spectrum of a harshly disturbed PD signal allows selecting frequency bands with fewer disturbances. Using this selected frequency for a PD acquisition gives a largely improved signal-to-noise ratio resulting in a clear pattern acquisition. The combination of spectrum analyser and PD detector within one instrument opens a broad field of new possibilities when analysing isolation defects even with large noise.

The SPEC mode shows the frequency spectrum of the input signal with a selectable span of up to 10 MHz. Three spectrum traces of the current input channel can be stored, compared, and analysed. A variable cursor serves to set the centre frequency for the PD pattern acquisition.



Software panel for pattern acquisition

ICMcompact pro

The ICMcompact pro with high speed colour touch display is a user-friendly PD detector with built-in functions for the most common tasks of the condition evaluation of medium and high voltage insulation. It comes with:

- PD spectrum analysis
- PD fault location for cables with digital storage oscilloscope (DSO) function
- Radio influence voltage (RIV) measurement
- High voltage measurement (HVM)
- Analogue gating
- Four-channel multiplexer





ICMsystem Generation 5

Advanced partial discharge detector



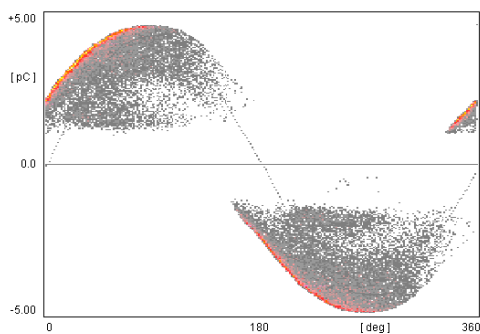
The ICMsystem is part of the Megger ICM series of digital partial discharge detectors. The ICMsystem is a powerful, versatile instrument for evaluating the condition of medium and high voltage insulation. The ICMsystem is usable over a range of frequencies of applied voltage, including power system frequency (50/60 Hz) and VLF (0.1 Hz).

The ICMsystem provides high-resolution digital PD patterns for classification of defects in high voltage insulation systems.

VERSATILITY

The key to the versatility of the ICMsystem is its modular design. The ICMsystem can be matched up with a variety of special accessories that adapt it to virtually any high voltage testing environment.

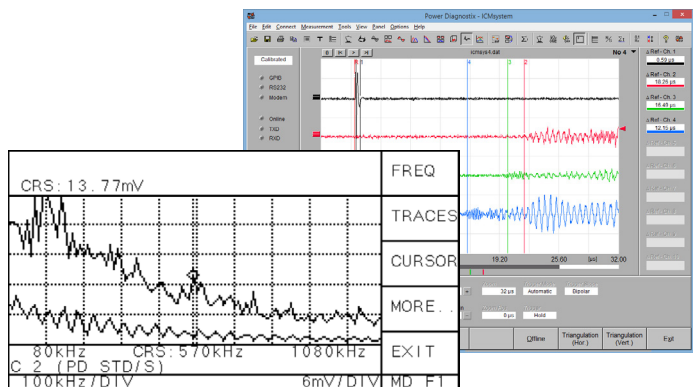
Assorted coupling devices, including quadrupoles, coupling capacitors, and current transformers, are available to sense the PD signal in the object under test. Like the other instruments in the ICM series, the ICMsystem provides effective noise gating that blocks phase-stable noise as well as noise independent of the applied voltage cycle, allowing the ICMsystem to be used in noisy environments without losing significant PD data. Appropriate selection of a pre-amplifier can assist further in achieving a high signal-to-noise ratio.



PC SOFTWARE

The operating parameters of the ICMsystem are fully computer controlled, making it simple to use with standard Megger software. The ICMsystem's PC software includes convenient options for in-depth analysis and printing of stored PD patterns.

For special applications and options for applications, such as DC testing or stepped high voltage testing, the ICMsystem allows recording PD activity versus time (sequentially) instead of versus phase angle.



OPTIONS

- Built-in spectrum analyser
- RIV measurement (according to CISPR and NEMA standard)
- Cable fault location
- Acoustic PD location
- Two to ten parallel input channels
- Transformer acceptance testing panel (for multi-channel devices)

Offering users complete access to detailed control parameters and the ability to download and analyse PD patterns on a PC makes the ICMsystem the ideal instrument for advanced analysis of phase-resolved partial discharge patterns, whether in research, utility, or industrial applications.

Using the multi-channel ICMsystem greatly simplifies partial discharge acceptance tests on large power transformers. With the true parallel acquisition of the partial discharge activity on up to ten channels, the overall testing period is substantially shortened.

ICMsystem Generation 5 Advanced partial discharge detector

The multi-channel version of the ICMsystem is specifically designed to meet the requirements of partial discharge acceptance tests on large power transformers.

The instrument builds on the acquisition core of the standard ICMsystem. However, by introducing an individual amplifier plug-in board for each channel, true parallel acquisition of the discharge magnitude of up to ten channels is achieved. The instrument can be equipped with optional features like RIV or acoustic PD measurement.

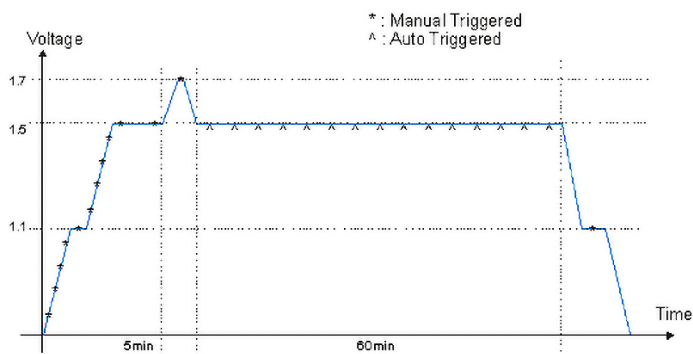


INDEPENDENT CHANNELS

For each of the partial discharge measurement channels an independent quadrupole, pre-amplifier, and amplifier plug-in board is required.

Internally, the system controller processes the discharge readings acquired for each channel in a true bipolar peak amplitude acquisition. Optionally, the PD readings can be weighted according to IEC 60270-2000.

Besides the partial discharge channels, the instrument offers the same number of independent channels for the measurement and sampling of the AC voltage signal provided by the quadrupole.



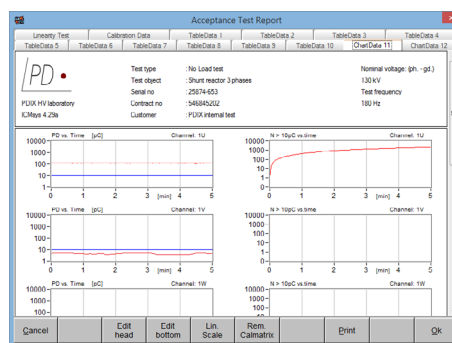
Typical test sequence for HV transformer

PATTERN ACQUISITION

In addition to the parallel acquisition of the PD activity for the meter and strip chart displays, the pattern acquisition core known from the standard ICMsystem offers the defect identification capabilities of the phase-resolved partial discharge analysis. The influence of power frequency harmonics on the PD pattern, often found with power transformers, can be clearly identified, as the waveform of the AC voltage is available for each channel.

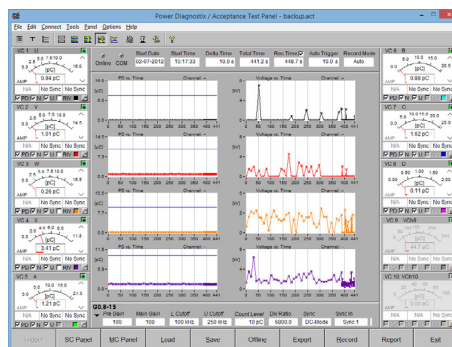
SPECIALISED SOFTWARE

The control software for transformer acceptance testing offers manual and automatic modes for the acceptance test. Reporting is simplified with MS Word and plain text output formats. The reports are based on user-selectable templates.



Report data

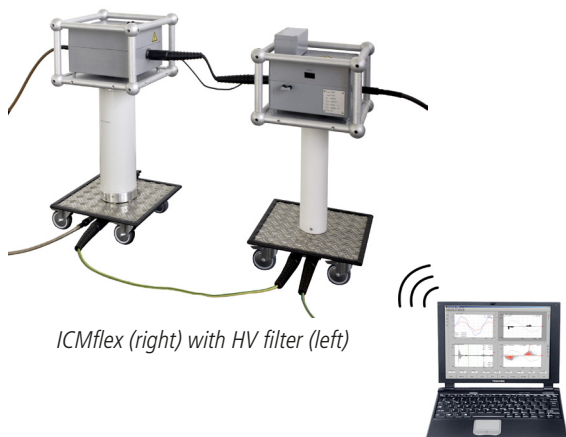
In acceptance test mode, the software shows up to ten meter displays, each indicating PD level, voltage, and frequency of the specific channel. With the centre display, the automatically or manually triggered values are presented in list mode or as a strip chart. Further, during calibration, the crosscoupling matrix between the channels is built-up, which offers essential information in case of PD location measurements on transformers. Additionally, the multichannel ICMsystem software provides the user with all the features known from the standard ICMsystem, such as multi-channel consecutive pattern acquisition, movie-like replay, or statistical evaluation, for instance.





ICMflex

Partial discharge and tan delta measurement system



The ICMflex high voltage instrument family offers inherent operator safety and greatly simplifies distribution-class cable testing and other field tasks involving partial discharge detection, loss factor (tan delta) measurements, and PD fault location. It has been designed to simplify the application and to combine different measurement tasks with one instrument. With the unique concept of the ICMflex instruments, the entire acquisition hardware is placed on high voltage potential right at the position where the signals are. Thus, no signal cables are needed, as the instrument is fully self-contained and battery operated. In case that the instruments are used for measurements in an environment with high frequency (HF) disturbance, they can be equipped with a gating input for effective noise reduction. Every

ICMflex instrument is fully remote controlled via Bluetooth or fibre optic communication. Using wireless Bluetooth or fibre optic technology the ICMflex tan delta and partial discharge analyser family increases operator's safety and greatly simplifies off-line testing and analysis of distribution-class cables and rotating machine stator windings.

UNIQUE CONCEPT

The ICMflex instrument family is available with different options and for different voltage levels. Additionally, the self-contained ICMflex acquisition unit can be placed on top of any third-party coupling or reference capacitor. The option TD offers tan delta and power factor (PF) measurements. The option PD provides partial discharge measurements according to the IEC 60270, whereas the option LOC includes partial discharge location for power cables. Finally, the optional high voltage T-filter for sensitive partial discharge measurements can reduce disturbance signals from a high voltage supply. The detachable Ni-MH battery provides more than eight hours of continuous operation, while a second battery can be charged. Any high voltage AC source can be used including resonant test sets and VLF high voltage sources.

Testing distribution-class cables in a field environment becomes an easy and inherently safe task. The ICMflex unit is simply placed between high voltage source and the cable to be tested – no further leads required. Thus, with one unit requiring only high voltage and ground connection all essential measurements on laid power cable are performed in one step: Tan delta, partial discharge, and partial discharge location.

Off-line testing of generator and motor stator coils is simplified in the same way. Using any high voltage source, the critical AC measurements on the stator coil are done simultaneously: Tan delta, power factor, and partial discharge.

OPTIONS

OPTION PD

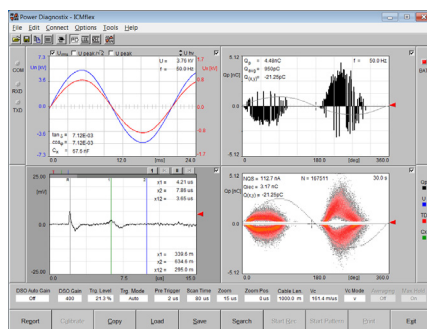
With the option PD the ICMflex software offers a meter display according to IEC 60270 and an oscilloscopic display of the partial discharge activity as well as a coloured j-q-n pattern based on the data received via Bluetooth or fibre optic connection. Placing the quadrupole and acquisition unit on high voltage potential greatly improves the sensitivity and avoids any noise pickup on signal cables.

OPTION TD

The tan delta analyser uses an unbalanced bridge formed by internal shunt capacitors, the reference capacitor, and the device under test. Here, the ICMflex software shows tan delta, power factor, capacitance, voltage, and frequency.

OPTION LOC

The partial discharge location option uses high speed (100 Msample) sampling of the PD pulses traveling the cable. Along with the analogue bandwidth of 20 MHz this enables precise location and mapping of the discharge activity along the cable.

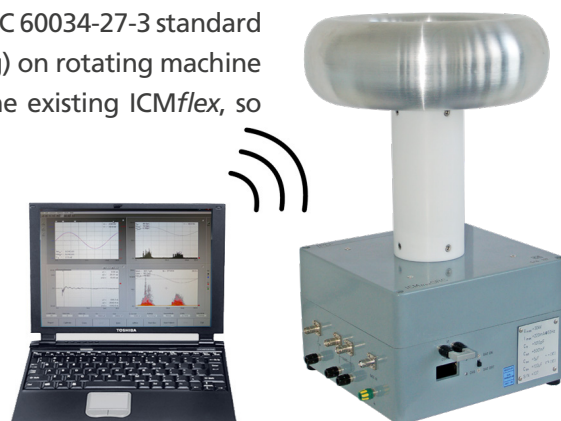


ICMflex software in PD mode

IEC 60034-27-3 tan delta measurement device

In order to meet with the requirements of the IEEE 286-2000 and the IEC 60034-27-3 standard for dielectric dissipation factor testing (also known as tan delta testing) on rotating machine stator windings and individual bars, Megger made a re-design of the existing ICMflex, so called ICMflex GRC (Guard Ring Control).

Both standards mentioned above apply to rotating machinery with a rated voltage of 6 kV and higher and describe the test procedures and evaluation criteria for tan delta testing of individual stator bars and complete assembled stator windings. The testing as described applies to the common insulation system techniques in use, such as the resin rich and global vacuum pressure impregnated systems.



Usually, the stator bars with a rated voltage of 6 kV and higher are provided of a field grading junction, consisting of a semi-conductive material, e.g., silicon carbide, at the slot-exit area, in order to grade the surface potential, where the stator bar leaves the grounded core. Depending on the rated voltage, this high resistance material with non-linear resistive voltage characteristic needs to be overlapped for a certain length with the slot's linear resistive layer. Based on such design, the tan delta measurement, which is intended for the ground wall insulation only, may be affected by the resistive losses of the field grading junction. For complete assembled stator windings the contribution of the losses generated by the semi-conductive material in the overall tan delta level cannot be neglected, and, hence, the regular ICMflex can still be used. However, as the evaluation criteria are specified for the slot section of individual bars only, guarding techniques have to be applied in order to minimise the influence of the field grading junction's losses on the overall tan delta value.

Several techniques have been studied during the past, such as the foil wrap methods and the slot-end gap method. Nowadays, with automatised bar manufacturing processes, it is practically not feasible to make an interruption at the slot exit and to provide the semi-conductive material after the tan

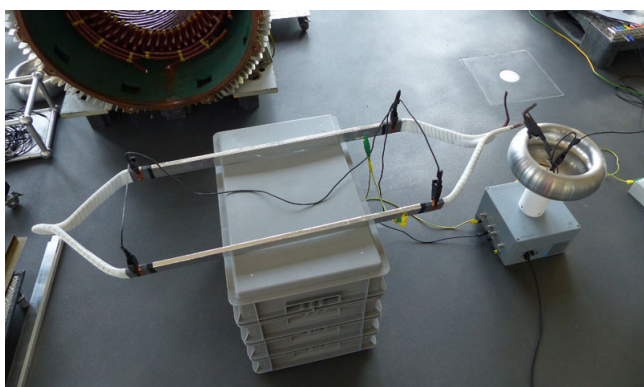
delta test, since this will cause tremendous delays and, in worst case, essential failures affecting the integrity of the insulation system. Besides this, both standards recommend performing the measurement on the end product, i.e., the individual bar provided with the field grading junction, and, hence, using both techniques as mentioned above are not an option. The only technique left is the driven guard method.

IEC 60034-27-3 READY

The new GRC option provides such driven guard inputs on the ICMflex's digital tan delta bridge. Beside this new feature, the instrument still keeps its versatility by enabling the simultaneously updated partial discharge and tan delta measurement results with the highest precision. This flexible unique concept strongly reduces the (re)winding and testing times in rotating machine manufacturing companies and service groups and can even be used in quality assurance labs for non-destructive evaluation of the ground wall performance of individual stator bars.

The ICMflex GRC is optimised for the capacitance range of stator bars and for smaller asynchronous induction motors up to Roebel bars for larger synchronous turbo generators.

Furthermore, the embedded voltage divider for up to 30 kV RMS comes with a DAkKS (former DKD) calibration certificate. The instrument is battery operated (up to ten hours) and equipped with a fibre optic link for communication with the computer via USB. The advanced software provides manual and automatic record modes, even a step-by-step guidance structure with customised report after completing the test sequence. The data tables, phase resolved PD patterns, different charts, and graphs can be exported into common text and spreadsheet processing packages, such as MS Excel.



Stator bar testing with ICMflex GRC



AICompact

Partial discharge measurement device

The AICompact is a portable unit for in-service acoustic and electric (UHF) partial discharge measurements on gas-insulated switchgear (GIS), transformers, and cable accessories. The instrument is fitted with a battery pack for independent operation up to three hours. It adapts to a variety of piezo-electric acoustic sensors and is supplied with a versatile sensor fixture. Additionally, the AICompact allows partial discharge measurements on external UHF sensors.



Offering easy-to-use acoustic partial discharge analysis of gas-insulated switchgear (GIS) and other high voltage equipment plus the optional analysis on embedded or external UHF sensors makes the AICompact the ideal solution for convenient in-service substation condition assessment.

EASY-TO-APPLY SUBSTATION CONDITION ASSESSMENT

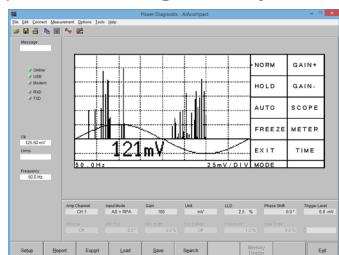
Acoustic partial discharge measurements can be easily applied on gas-insulated switchgear and other high voltage equipment without the need of interrupting the operation. Such on-line measurements help to identify internal imperfections of the insulation system, which may lead to breakdown and system failure in the future.

Acoustic partial discharge measurements rely on the close acoustic contact of the area producing the discharge to the point of access, where the sensor is placed. Most of the partial discharge activity in GIS offer such a good contact and, hence, can be detected at a good sensitivity. Therefore, discharges from sharp points or cones as well as discharge activity from delaminations can be identified at a sensitivity, which is mostly comparable to the

conventional electrical detection according to the IEC 60270. For some defect types, such as the so-called hopping or bouncing particles, the acoustic detection is by far superior to the electrical detection.

The AICompact offers automatic detection of the used sensor or pre-amplifier. Usually, the instrument is operated with acoustic sensors with remote supplied embedded pre-amplifiers directly connected to the signal input. Alternatively, the RPA1F can be inserted close to the sensor to boost the signal, in case longer signal cables are used or in case of low-level measurements.

UHF measurements on embedded or external sensors are possible with the use of the FCU2, a logarithmic frequency converter, which covers 100 MHz to 1800 MHz. As with the pre-amplifiers, the AICompact automatically detects the FCU2 and changes into the logarithmic display for the UHF detection. To protect the instrument's hardware it is advisable to connect an input protection unit like IPU2B to the sensor's output.



AICompact software in SCOPE mode

DISPLAY MODES

In SCOPE mode, the AICompact shows the phase-resolved partial discharge signal or pattern. Here, the 'Freeze' function allows keeping such a captured pattern for further evaluation or for taking screenshots.

The METER mode offers four bar graph displays showing derived quantities of the captured activity. The graphs display the RMS and the peak PD level, as well as their 50 Hz (60 Hz) and 100 Hz (120 Hz) content. The instrument automatically synchronises to the line frequency.

Within the TIME mode, the AICompact displays five or ten AC cycles triggered by a partial discharge event. Thus, this display shows the pattern of consecutive partial discharge events and, hence, offers a clear identification of bouncing particles and the severity of their activity.

OPTIONS

- **AICompact software:** All captured patterns and displays can be transferred to a notebook via an USB interface using the optional AICompact software. Furthermore, the software allows acquisition of coloured PD patterns.
- **MUX12:** Every AICompact comes with a four-channel multiplexer to split the PD signal and the voltage signal, with individual setup and calibration factor for each channel. On customer request, we also deliver the device with a 12-channel-multiplexer.

TDAcompact Loss factor analyser

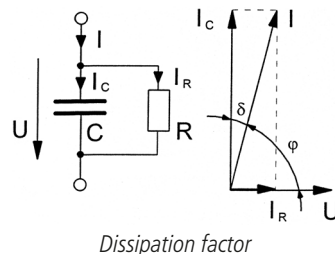
The TDAcompact is a portable capacitance and tan delta analyser. The focus of the instrument's application is on the analysis of the epoxy-mica insulation of rotating machines. Besides this, the unit is applicable for oil-paper insulation systems and especially for mass-impregnated cables.



DISSIPATION FACTOR ANALYSIS

Analysing the dissipation factor (tan delta) is a traditional method to assess the condition of an insulation system. With the analysis of the dissipation factor, emphasis is more put on the overall health of the insulation system, whereas with partial discharge analysis, the focus is on individual defects producing discharge activity. Therefore, the application of tan delta measurements concentrates on insulation systems, which are relatively stable against partial discharge.

Most prominently, the health of an epoxy-mica insulation of a rotating machine can be assessed using a tan delta analyser. Especially, the presence of humidity within the winding, the surface contamination of field grading elements, or the polarisation losses of improperly cured resin, can be detected. Thus, the tan delta analysis is still a good complement to the partial discharge testing.



PRINCIPLE OF OPERATION

The TDAcompact simultaneously samples the AC current drawn by the device under test and the current drawn by a reference capacitor. Subsequently, the two current traces are evaluated and the capacitance, the tan delta, and the level of the high voltage are calculated. The unit continuously displays and refreshes these results.

Therefore, the instrument does not require any user interaction as with the traditional Schering Bridge, nor does the refresh of the display take that long as with automatic adjusting bridge-type analysers. The basic resolution of the tan delta measurement is 10^{-4} , which fulfils the requirements for rotating machine testing as well as for testing on mass-impregnated cables.

MODULAR CONCEPT

Besides the stand-alone field test application of the TDAcompact, the instrument can also become a part of a larger and automated test system. Using the software HVpilot, the instrument will be read according to a pre-programmed test sequence. Besides tan delta measurements, such automated test systems further include partial discharge measurements and so-called step tests.

STAND-ALONE INSTRUMENT

The TDAcompact is designed as a stand-alone instrument. To measure the two currents the basic configuration of the TDAcompact comes with a standard capacitor, that has a built-in shunt capacitor, in combination with an external shunt. Optionally, the unit can be supplied with further shunt capacitors.

Generally, the TDAcompact is connected with digital fibre optic links to the precision shunts, which allow operation on any potential including the high voltage connection of the device under test. The measuring frequency can vary between 20 and 500 Hz. Upon request, Megger can supply complete portable tan delta test systems including the high voltage transformer.



FOsystem

Fibre optic transmission systems

The FOsystem is a complete set of instruments for convenient fibre optic transmission of different types of signals from a variety of sensors. The FOsystem means simple integration into existing measuring system and allows easy implementation of fibre optic transmission to solve noise, safety, and signal quality issues in high voltage measuring environments and other demanding conditions.



FOsystem with eight channels

FIBRE OPTIC VS. WIRING

Although differential and isolation amplifiers can eliminate some of the many possible sources of error and at least reduce their effects, only fibre optic isolation amplifiers bring definite relief. Optical isolation of measuring circuits eliminates long measuring cables prone to electromagnetic interference, and potential differences of several hundred kilovolts become possible between measuring and recording circuits.

Applying fibre optic isolation with high impulse-current applications allows the ground potential to have dramatically transient changes without affecting the integrity of the signals captured and transmitted.

Besides these intrinsic advantages of optical transmission, the FOsystem by Megger means simple integration into existing measuring systems and low electromagnetic interference even under difficult measuring conditions, thanks to the use of metal-clad and very compact transmitter equipment. In many cases, miniature transmitters designed on SMD principles can even be integrated into the measuring object.

SYSTEM VARIANTS

The FOsystem is a set of instruments consisting of transmission units, receiver units, and sturdy fibre optic cables for convenient fibre optic transmission of different types of analogue signals from a variety of sensors. The FOsystem allows easy implementation of fibre optic transmission to solve noise, safety, and signal quality issues in high voltage measuring environments and other demanding conditions.

The Megger FOsystem comes in several basic variants, for each of four signal types:

- FOS1 for analogue transmission of analogue signals from DC up to 10 MHz
- FOS2 for digital transmission of analogue signals from DC up to 20 kHz
- FOS3 for pulsed digital transmission of slowly changing signals, such as temperatures.
- FOS4 for digital transmission of analogue signals from DC up to 65 MS/s

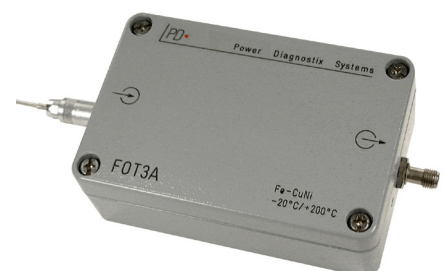
The fibre optic transmitter modules (FOT) are small individual modules for installation at sensors or signal sources. The fibre optic receiver modules (FOR) are mounted side-by-side in a 19-inch or half 19-inch rack and, thus, can be combined to multi-channel measuring systems.



Fibre optic transmitter FOT1 with options S4 and S6



Acoustic sensor



Transmitter unit FOT3A

Fibre optic transmission systems

OPERATION

The output signal of the signal source or sensor (for example, voltage, dynamic pressure, current, or partial discharge) is fed to the input of the battery-operated fibre optic transmitter FOT. The transmitter then either converts the pre-processed analogue signals into a serial 12-bit signal with 100 kHz sampling rate, which modulates the infrared light emitted by the transmitter diode according to the value of the input signal, or digitises the signal and transmits a digital telegram. This digitally modulated light is transmitted via the optical fibre to the receiver, which converts the optical signals back to voltages (± 10 V) for further processing. An insufficient optical level (violation of the upper or lower limit of the dynamic range) is detected and indicated.

TRANSMITTER

The transmitter is installed in a cast aluminium enclosure. The FOT is fitted with a NiMH-battery for a minimum operating time of twenty hours (FOT1 and FOT2), whereas the FOT3 offers up to two years of operation while sending a telegram every five seconds.

Transmitters are available in different variants, including, for instance, versions for adjustment to piezoelectric pressure transducers or displacement/position transducers. Besides these options, the units can be fitted with customer-specific circuits for adjustment to further sensors. We use a robust optical fibre type which features a very small influence of mechanical loads on its attenuation parameters.

Type	Option	FOS1	FOS2	FOS3	FOS4
FOT1	Analogue transmitter 0.2 Hz to 5 MHz (-3 dB)	X			
FOT2	Digital transmitter 0 to 20 kHz (-3 dB)		X		
FOT3A	Transmitter for temperature measurement			X	
FOT3B	Transmitter for voltage and current			X	
FOT4A	Digital transmitter up to 20 MS/s, (0.2-2 MHz bandwidth)				X
FOT/S2	Pressure measurement	X			
FOT/S3	Fixed DC coupling	X	X		X
FOT/S4	Switched DC coupling	X	X		
FOT/S6	Remote activation	X			X
FOT/S7	Special input range	X	X		X
FOT/S8	Pressure measurement (Kistler 6203 sensor)	X			
FOT/S9	Displacement measurement	X			
FOT/S10	Bandwidth 10 MHz	X			
FOT/S12	Ultrasonic measurement	X			X
FOT/S14	EMC enclosure			X	X
FOT/S15	Additional BNC connector for external power supply	X	X	X	X
FOT/S16	Pressure measurement (Kistler 4043A sensor)	X			
FOR1	Receiver plugin 0.2 Hz to 5 MHz	X			
FOR2	Receiver plugin 0 to 20 kHz		X		
FOR3	Receiver plugin FOR3			X	
FOR4	Receiver plugin up to 65 MS/s, (30 kHz bandwidth)				X
FOR/E2	DC coupling, track/hold switch	X			
FOR/E3	DC coupling, adjust button	X			
FOR/E5	1.2 inch width, output on rear side	X	X		
FOR/E6	Bandwidth 10 MHz	X			
FOR/E7	Bandwidth limit 1 MHz, noise reduction	X			
FOR/E8	Single-channel remote transmitter	X			



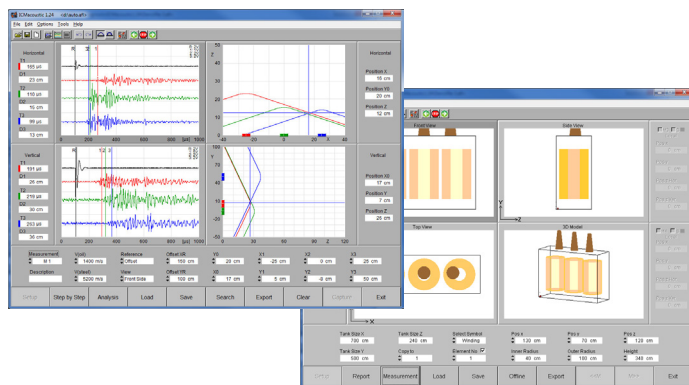
FOS4 Fibre optic transmission systems



The FOS4 offers high speed data acquisition via fibre optic cables on multiple channels in parallel. The scalable system allows the acquisition of acoustic PD signals or other measurement signals under AC, DC, or during impulse testing in laboratories as well as on-site. The modular system accepts up to twelve optical channels and comes with high-speed controller card to communicate with a computer. Besides this, the FOS4 system has additional signal output on the rear side and can be used as a digital isolated amplifier without the use of any software.

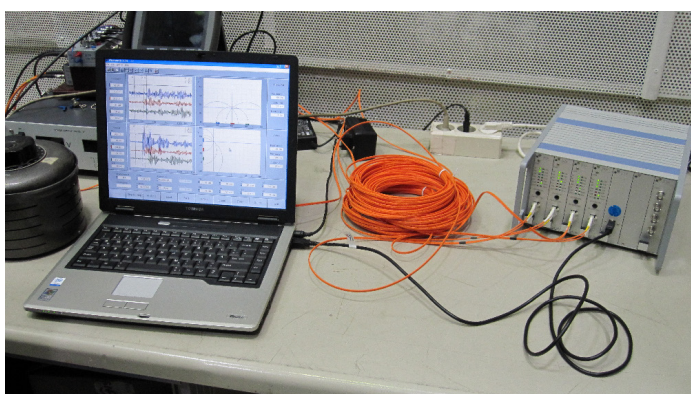
ICMacoustic SOFTWARE

The ICMacoustic software offers full control of the FOS4 system including averaging and trigger logic. It is designed for the acoustic location of transformer partial discharge with the triangulation method. The basic idea is to reduce the location to a 'flat problem'. I.e., to horizontally position three sensors on a line to firstly get the horizontal position of the layer (see upper graph of the software's measurement panel, left). Here, the position of the sensors are entered and assigned to their channel. In a second step the sensors are placed on a vertical line at the found vertical position. In the lower graphs the sensor positions are entered accordingly.



APPLICATION EXAMPLE

PD location by acoustic travel time analysis



The ICMacoustic system consists of FOT4 transmitter units and FOR4D receiver units. Each channel acts as an independent transient recorder with its own storage and settable acquisition speed and storage depth. The sampling rate is 20 MSamples/sec. and, hence, sufficient to even acquire the pointing vector of the incoming acoustic wave, when using a two-dimensional three-sensor configuration.

FEATURES

- Sampling rate: 20 MS/s
- Up to 12 receiver units with independent optical channels
- Remote controlled via high speed USB port



FOS4 with eight channels



CAL1, CAL2, CAL3 series Calibration impulse generators



PD measurement is a useful tool to analyse the insulation of high voltage components. However, PDs can usually not be measured directly, just the apparent charge of such signals are captured by the measuring instrument. Therefore a calibration of the whole measuring system is required in principle. Hereby short-duration current pulses of known charge magnitude are injected into the system, and by this a scale factor can be calculated for later PD measurements.

Megger offers a wide range of calibration charge injectors suitable for use in calibrating PD measurements. The appropriate choice of a calibration instrument depends on the range of typical charge values of the PDs being measured. Calibrators can also be used for time domain reflectometry in cables to determine cable length and location of joints.

Megger calibrators enjoy all the advantages of 20 years' experience in calibration services. The broad range of easy-to-use and robust units for many different applications ensures reliable PD measurements compliant to international standards, such as IEC 60270, CISPR 18-2, and NEMA 107-1987 (CAL3A/B).

INTERNATIONAL STANDARDS CONFORMITY

New calibrators are shipped with the calibration certificate to ensure the traceability to international standards. The calibration is performed by the calibration laboratory of Power Diagnostix Systems GmbH, which has received the accreditation within the German Calibration Service DKD by 2003. In January 2012, Power Diagnostix passed over to the newly introduced German accreditation authority DAkkS (DAkkS = Deutsche Akkreditierungsstelle). Power Diagnostix's new accreditation is filed under D-K-15068-01-00. The audit according to ISO 17025:2018 was held by 'Physikalisch Technische Bundesanstalt' PTB, the German authority of standards.



SIMPLE TO USE

The calibrator is switched on with the button On/Off. Both amplitude (Range) and polarity (Pos/Neg) of the single charge pulse per cycle are displayed and can be adjusted by pressing of the two buttons. Each calibrator is also available supplying two pulses per cycle, as well as with double impulse output with adjustable interval. The instrument automatically synchronises to line frequency by a photo diode. In case of insufficient pick-up of power frequency light, the calibrator automatically selects the internal quartz oscillator (50 Hz and 60 Hz versions available).

UNIQUE CONCEPT

The Megger line of calibration impulse generators is unique in that the charge pulse is generated by injecting a variable voltage step (correlated to an internal reference) via a fixed capacitor. This injection capacitor is relatively small, as the step voltage amounts up to 120 V for full range output. Therefore, the Megger calibrators offer excellent impulse properties. Further, calculation of the correction factor is usually not necessary ($CI \ll CS$).

AVAILABLE CALIBRATORS

The standard calibration impulse generator CAL1A offers the charge range of 1/2/5/10/20/50/100 pC, while the CAL1B, mainly suitable for rotating machinery testing, covers the range of 0.1/0.2/0.5/1/2/5/10 nC.

Special signal sources are available for GIS measurements, such as the CAL2B with voltage output: 2/5/10/20/30/40/50 V, $R_L = 50 \Omega$, $t_R \leq 200 \text{ ps}$, $t_F = 100 \text{ ns}$.

For calibrations on RIV measurements, signal generators like the CAL3A are available. The CAL3A offers a continuous sine wave voltage signal of 600 kHz to 1350 kHz, adjustable in steps of 50 kHz. Available voltage steps are 10/20/50/100/200/500 μV /1/2/5/10 mV. In burst mode, the output signal is switched on during half of the power frequency cycle – versions for 50 Hz and 60 Hz are available.

RIVmeter

Radio influence voltage meter



The RIVmeter is an instrument for the measurement of radio influence voltage (RIV) according to the relevant standards (NEMA 107-1987, IEC CISPR 18-2:2010, EANSI 63-2-1996, VDE 876, DIN EN 55016-1-1). The instrument has a bandwidth of 9 kHz and a tunable center frequency of 100 kHz to 2 MHz. Technically, the RIVmeter is a selective μV -meter. However, the meter reading is weighted according to the CISPR weighting curve, whereas the repetition rate has a strong impact on the reading. The RIVmeter is an ideal instrument to replace outdated RIV measurement instruments in a transformer testing lab, for instance.

RIV MEASUREMENTS

Some routine PD measurements are still done according to IEEE standards requiring the measurement of radio influence voltage. The RIV value is given in μV (interference voltage). A narrow band filter performs a quasi-integration of the PD pulses with a quasi-peak detection at the centre frequency. This centre frequency can be adjusted between 100 kHz and 2 MHz. The narrow-band pass filter allows to suppress external noise, e.g., in non-shielded laboratories by varying the centre frequency of the filter.

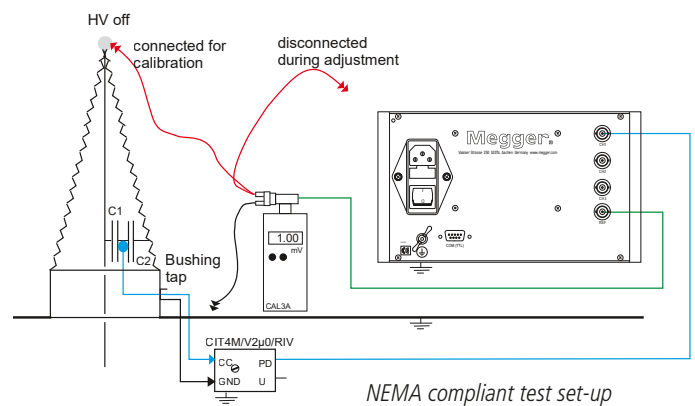
Two factors determine the RIV in μV : the transferred charge and the repetition rate of the PD impulse (number of PD pulses per second). Because of this proceeding, a direct translation of the measured RIV values (μV) into values of apparent charge in pC is not possible.

Historically, the RIV technique is based on measurement receivers to estimate the disturbance of communication lines.

CALIBRATION

The calibration of the RIV measurement is done using an RIV calibrator, injecting a sine wave of typically 100 μV into the bushing. The multiplexer of the RIVmeter is used to conveniently determine the correction factor according to NEMA 107-1987 and other standards. Here, the unit compares the voltage injected, i.e., loaded by the bushing's impedance, with the voltage detected at the bushing tap to automatically determine the k-factor. This correction factor is then stored independently for each channel during calibration.

The standard calibrator for RIV calibration, CAL3A, offers a selectable frequency range of 600 to 1350 kHz in steps of 50 kHz. The output voltage covers 10 μV to 10 mV in 1-2-5 steps. The CAL3B calibrator offers a frequency range of 400 kHz to 1.9 MHz with the same output voltage but in steps



Thus, properties of those instruments then available became part of the NEMA standards. However, both the 9 kHz bandwidth and the CISPR weighting curve put emphasis on some partial discharge activity, while they tend hiding others.

of 100 kHz. Having the same frequency range as the CAL3B, the CAL3D comes in contrast with a high impedance output (> 20 k Ω) according to IEC CISPR 18-2:2010.



CAL3A and CAL3D



HVcompact High voltage meter

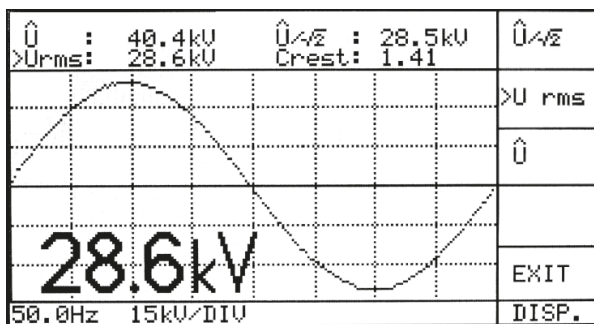


The HVcompact is a high voltage meter with an auto-ranging oscilloscope display of the voltage waveform. The unit displays \hat{U} , $\hat{U}/\sqrt{2}$, Urms, frequency, and the crest factor. To improve the readability, one selected measurement is displayed using larger characters. To protect test specimens, the unit offers a pre-settable voltage limit, which trips a relay output. The divider ratio is widely adjustable and is kept with a non-volatile memory.

Mostly, the HVcompact is used in case of modernisation or upgrade of high voltage test sets. With conventional analogue or digital panel meters, usually, solely the voltage is displayed. The HVcompact adds several helpful functions.

OSCILLOSCOPIC DISPLAY

The input voltage is sampled in high resolution and one cycle is displayed as an oscilloscopic trace. Any distortion of the high voltage due to transformer core saturation or power frequency harmonics, for instance, are clearly identified with this display. The screen is automatically synchronised with the measured voltage and the amplitude deflection is controlled by an auto-range function.



MEASUREMENTS

Usually, the instrument connects to capacitive or resistive divider. With larger high voltage transformers, the capacitance of the condenser bushing can be used. Within the menu of the HVcompact the divider ratio can be adjusted. It is kept with a non-volatile memory. The nominal input range of the HVcompact is 100 Vrms. In order to cover correctly even strong harmonics, peak voltages of up to 200 V are accepted and sampled.

Using the sampled voltage, the instrument calculates based on the preset divider ratio the characteristic quantities of the high voltage signal. With the upper two lines of the display the peak voltage \hat{U} , the peak voltage divided by the square root of two $\hat{U}/\sqrt{2}$, and the effective voltage Urms is shown. Additionally, the crest factor is calculated and displayed. With the bottom line of the display, the frequency of the captured voltage signal

is shown. This bottom line further shows the scaling of the Y-axis grid of the oscilloscopic display. One selected value is displayed using larger characters for improved readability.

SAFETY FEATURES

A voltage limit can be set with the instrument in order to avoid that a test specimen is stressed above its allowable voltage. In case the voltage then exceeds this limit, a relay is tripped. This relay can be used to block the 'UP' button of the control circuit or to disconnect the main circuit breaker.

Additionally, the instrument detects incipient breakdown or flashover. Therefore, a maximum permissible voltage change per second (dU/dt) can be set. Each individual cycle of the high voltage signal is analysed. Especially with long-term voltage endurance tests, this feature can minimise the thermal destruction of the breakdown channel and, thus, improves the analysis of the defect.

OPTIONAL OUTPUTS

The HVcompact is available with an optional recorder output (REC OUT). In case, a connector carries a re-converted analogue (DC) signal of up to 10 V, which corresponds to the high voltage signal. This signal can be fed to a paper recorder, for instance. A screw terminal carries the optional relay output signals for voltage limit and breakdown detection.

READY-TO-USE CALIBRATED

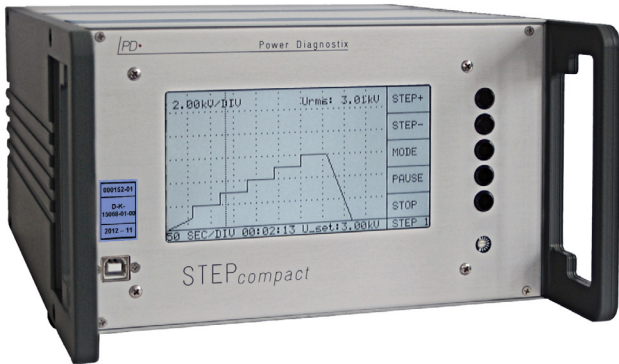
Every HVcompact is delivered with a fully traceable calibration according to the standards of the German accreditation authority DAkKS (DAkKS = Deutsche Akkreditierungsstelle).

On order the HVcompact can be calibrated on-site together with its divider impedance.



STEPcompact

Step voltage test controller



Increasing the high voltage stepwise is a task that is often required during type testing and production testing of high voltage products. The STEPcompact is an instrument to automate such step tests. The unit combines the control function with the measurement capabilities of a high voltage meter. As a stand-alone instrument, the STEPcompact can be easily moved between different high voltage test sets.

The STEPcompact measures the voltage signal derived from a capacitive or resistive divider. Using a fiber optic transmission, the UP and DOWN relay contacts of the voltage regulator are actuated to adjust the high voltage according to the programmed test sequence.

In the standard configuration, the STEPcompact has relay contacts on the back of the housing.

To ensure a safe unattended processing of a step test, the STEPcompact offers several safety features. Incipient breakdown is detected by monitoring the change of the voltage (dU/dt). Further, timeout limits can be set. The instrument keeps a record of the recent test to validate its successful completion or to indicate the point of breakdown or cancellation.

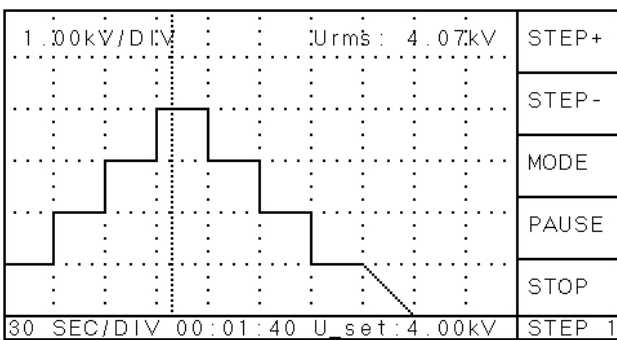
HVpilot SOFTWARE

The HVpilot software allows the complete supervision of a high voltage test sequence. Using a serial interface, the software connects to the STEPcompact for the voltage control and measurement. Further, the HVpilot software offers convenient programming and editing of the test sequences. Additionally, this software can connect to the ICMcompact to read the partial discharge level and to the TDACompact to read the tan delta, as well as the capacitance of the device under test. An export function allows to save the acquired data in file formats for MS Excel and MS Word.

FEATURES

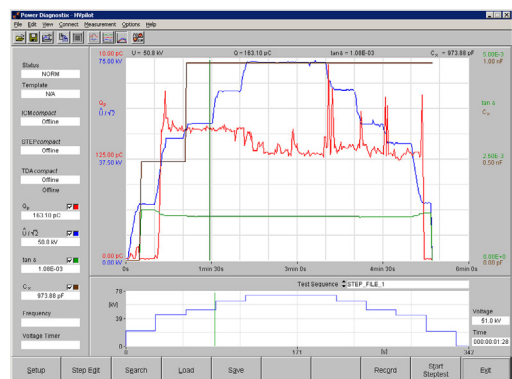
Similar to the HVcompact, the instrument calculates and displays the characteristics of the captured high voltage signal, such as \hat{U} , $\hat{U}/\sqrt{2}$, U_{rms} , frequency, and the crest factor. The unit accepts a nominal input voltage of 100 V RMS. In order to correctly acquire even excessively distorted high voltage signals, the STEPcompact samples up to 200 V peak signals.

Using the five menu-driven control buttons, up to 35 different test sequences can be programmed and stored in a non-volatile memory. A test sequence consists of steps and ramps in any order. Besides the automatic mode, a manual mode can be used to set a specific voltage and keep it over time. In factory environments with strongly varying load situations, this function can be very helpful to maintain a stable high voltage level with long-term tests.



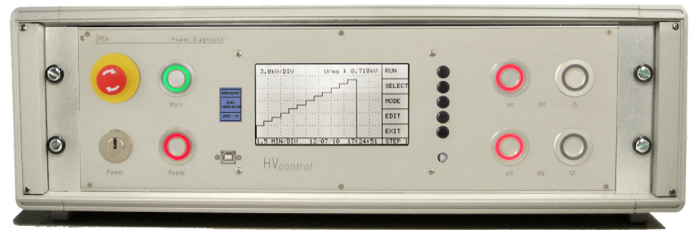
Running step test sequence

Up to seven configurations can be stored in the non-volatile memory in order to adapt the instrument to the properties of different high voltage test sets. Besides the divider ratio, a configuration setup contains settings, such as the control cycle or the control window to tune the instrument to the properties of the high voltage test set.



HVcontrol High voltage test control unit

The *HVcontrol* unit combines all standard functions required to manually operate a high voltage transformer. It includes a safety contact loop, the measurement of primary and secondary current, as well as of the primary voltage. User-settable limits for the primary and secondary current trip the main circuit breaker. The safety loop, as well as the emergency stop is hard-wired and equipped with forced contacts.



EASY INTEGRATION

Due to its flexible design, the *HVcontrol* can be used on any high voltage test set. Especially, in case of the modernisation of old test sets, the *HVcontrol* offers a multitude of improvements if compared with conventional relay based controls.

The unit comes with rigid solid-state piezo push buttons. Each of these control buttons has an illuminated ring to indicate the state of the function controlled by this specific button. This allows an easy and intuitive operation of the *HVcontrol*.

The *HVcontrol* offers an output for TTL gating and a SCOPE display and comes in a 19-inch subrack (3 HU). This makes it an easy replacement of older controls having the same size. On its rear panel, the *HVcontrol* offers conveniently detachable screw terminals for the different controls and optional instruments.

MODULAR CONCEPT

Besides a mere drop-in replacement of an old control, the *HVcontrol* can be combined with other test instruments of Megger to build a fully automated acceptance test environment.

The instrument can be combined with the *ICMcompact* for partial discharge testing and with the *TDAcompact* for tan delta and capacitance measurements.

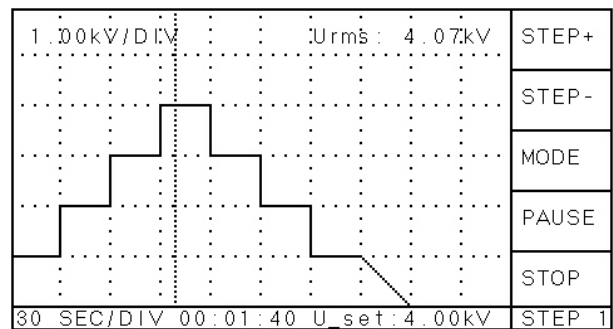
Depending on the application and its requirements, the instruments can be mounted in desktop enclosures, 19-inch racks, or control desks fitted with 19-inch mounts.



STEP TESTS

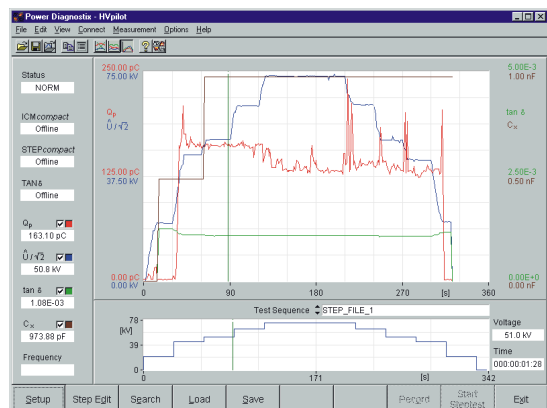
Optional feature

Increasing the high voltage stepwise is a task that is often required during type testing and production testing of high voltage products. The *HVcontrol* can be ordered with an optional feature to automate such step tests.



HVpilot software

The *HVpilot* software allows the complete supervision of a high voltage test sequence if the *HVcontrol* is equipped with the option for step tests (voltage control and measurement). Further, the *HVpilot* software offers convenient programming and editing of the test sequences. Additionally, this software can connect to an *ICMcompact* to read the partial discharge level and to a *TDAcompact* to read the tan delta as well as the capacitance of the device under test.



PRPDreplay

PD pattern sequence and synchronisation signal generator



The PRPDreplay is a portable pattern sequence and synchronisation signal generator. It allows the replay of partial discharge data sets recorded and stored with Megger instruments, such as the ICMsystem, ICMcompact, ICMmonitor, etc. It provides the analogue signals of the PD pulses and of the synchronisation voltage for further processing. Raw data can be imported via USB port from DAT, DTC, or DT2 files.

The device is battery operated and comes with a set of default phase-resolved partial discharge patterns.

FEATURES

- Intuitive touch display operation
- Robust Explorer case
- Battery driven (up to eight hours continuous operation)
- Fully operational even while charging
- Ability to load customer supplied pattern from USB storage
- 2x12-bit D/A converter
- Embedded software
- Set of typical PD patterns included

FIELDS OF APPLICATION

Compact design and easy handling make the PRPDreplay the ideal solution for:

- Research, education, and training
- Off-line PD signal simulation
- Sensitivity and PD device checks
- AI training purposes

SIX REASONS FOR THE PRPDreplay

- **Compact** - Easy to handle
- **User-friendly** - Intuitive touch display operation
- **Stand-alone** - No accessories needed
- **Independent** - Battery operated
- **Portable** - Fits even in cabin baggage
- **Robust** - Rugged enclosure



Replay display of the PRPDreplay

ATTanalyzer

Acoustic breakdown locator

The Megger ATTanalyzer is a simple and effective stand-alone tool to aid in commissioning tests of gas-insulated switchgear (GIS) systems and power transformers. The ATTanalyzer reduces delays in commissioning and maintenance by locating flaws in GIS systems and transformers acoustically.

REDUCING BREAKDOWN RISKS

Gas-insulated switchgear systems occasionally contain flaws that go unnoticed during installation or maintenance but that lead to immediate breakdown when high voltage is applied. These flaws can include, e.g., floating particles, gaseous impurities, and faulty insulator discs. If a gas-insulated switchgear system contains such a flaw when brought on-line, sparking and breakdown occurs at the flaw, forcing de-energisation and repair. Without diagnostic aids, location of the flaw can lead to costly delays and unnecessary opening of unflawed gas chambers bearing the risk of causing new imperfections, while searching for the chamber containing the flaw.

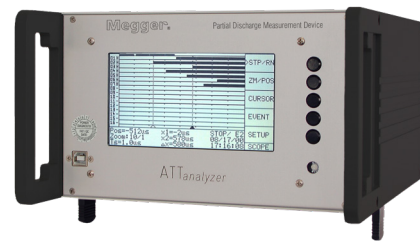
Using the ATTanalyzer, the flaw can be located by mounting acoustic sensors to the outside of the GIS or transformer tank in several locations. When high voltage is applied to the GIS, if a breakdown occurs, the acoustic sensors pick up the disturbance and transmit a corresponding optical signal to the ATTanalyzer acquisition unit. The ATTanalyzer then compares the relative travel times of the sound signals to determine which sensor is the closest to the flaw.

Following initial location of the breakdown's origin, the acoustic sensors can be repositioned closer to the flaw to narrow the location further, to within a few centimetres. Comparing the resulting display with the display of the breakdown while using a hammer to trigger a similar pattern on the ATTanalyzer, further helps to narrow down the location of the flaw.

SYSTEM COMPONENTS

The ATTanalyzer consists of a compact central acquisition unit, acoustic sensors, and sturdy fibre optic cable to connect the sensors to the acquisition unit. The stand-alone acquisition unit, housed in a half 19-inch rack, receives and internally processes signals picked up by the sensors. The acoustic sensors for external mounting on the GIS system can be easily attached and removed for reuse. Up to sixteen sensors can be connected to the ATTanalyzer.

Fibre optic cables, up to 200 m in length, provide galvanically isolated connection of the sensors to the ATTanalyzer acquisition unit.



OPERATING MODES

AUTO

This mode considers each trigger event. Thus, the instrument's memory contains the most recent 16 events.

NORM

Using this mode, the unit changes to the STOP mode after 16 events captured. Therefore, the memory contains the first 16 events.

SINGLE

This mode changes after each captured event into STOP mode. Changing manually back into RUN mode re-enables triggering.

FEATURES

- The ATTanalyzer's embedded LCD panel displays the relative travel times from the sensors as horizontal bars. Cursors and settings are manipulated through buttons and on-screen menus.
- The display screen also shows relevant quantities, such as sampling rate, time between cursors, time and date stamp, etc.
- Using simple menus, users can adjust the sampling rate of the acquisition unit appropriately depending on how widely or closely spaced the sensors are to each other. The ATTanalyzer features storage of up to sixteen GIS fault events with time and date stamps. Users can choose one of three operating modes.



PD accessories

Sensors

ULTRASONIC PD SENSORS

Acoustic sensors AS75I and AS150I

The AS75I and AS150I are active sensors with very high sensitivity for measurements on GIS and transformer tanks. They come with a built-in 40 dB preamplifier and can be connected to the RPA1D, RPA1F, RPA1G, or directly to the AIAcompact, ICMsystem, ICMcompact, or ICMmonitor.

The sensor fixture SFX1 is suited to secure the acoustic sensors on a GIS. The magnetic sensor fixtures SFX2 and the sucking fixture SFX3 are for temporary mounting of the acoustic sensors on a transformer tank.



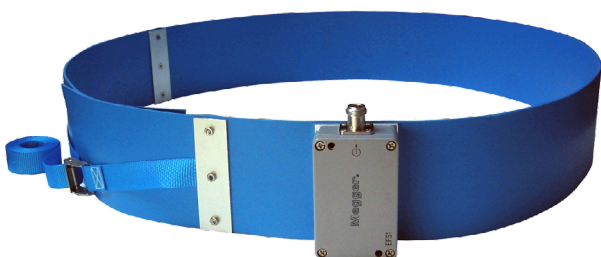
EXTERNAL RETROFIT UHF SENSORS FOR GIS

Window sensor WS80/95/140

External window sensors are used to conveniently equip older GIS with UHF monitoring. Megger offers such window sensors of different sizes to fit the inspection windows of older GIS. Here, the obtained results with sensitivity are comparable to embedded sensors, if the window has a diameter of 80 mm or higher. In case well matched, such external window sensors offer a sensitivity of few pC.

External flange sensor EFS1

The external flange sensor EFS1 is a wide-band UHF antenna for PD detection on GIS and GIL. Since it is wrapped round the unshielded flange connection, the flange dimensions are required on order. With the N-connector it can be directly jointed with a UHF preamplifier like the UHF1 and UHF2 or the pre-acquisition unit FCU2. Megger offers two different models, for permanent and for temporary installation.



UHF TRANSFORMER SENSORS

Valve sensor TVS2 and flange sensor TFS1

UHF transformer sensors can be used to detect internal PD on power transformers in a frequency range between 300 MHz and 1 GHz. The UHF frequency range can be chosen under difficult on-site conditions, such as high impact of the measurements due to corona discharges or other disturbances within the typical HF range (100 kHz to 10 MHz). UHF sensors are suitable for retrofitting as well as for pre-installation. The sensitivity can be proven by injecting an impulse generator signal in the UHF range into the system. UHF PD signals can be used for PD pattern analysis as well as for triggering acoustic measurement systems, like the FOS4, for instance. Megger provides the TFS1 for valve flanges and the TVS2 for oil valves. Both sensors can be modified and designed in accordance of special customer specifications.



CABLE SENSORS

Differential foil sensor DFS1

Besides the embedded coaxial sensor of cable accessories, external sensors can be applied to joints and terminations. Especially on cross-bonding joints differential foil sensors serve to capture partial discharge signals in elevated frequencies. Such foil sensors can be permanently installed for monitoring or temporarily applied for survey type measurements.



Quadrupoles and isolation transformers

QUADRUPOLES

When a quadrupole and a coupling capacitor are used together as the coupling device, high voltage is applied both to a test object and to the coupling capacitor in parallel with the test object. A quadrupole (sometimes called a measuring impedance) can then be placed in series with either the coupling capacitor or in series with the test object. Some quadrupoles also output a low-voltage copy of the applied high voltage wave for synchronizing the PD detector. The three basic models of available Megger quadrupoles are briefly described here.

CIL quadrupoles

The CIL quadrupoles consist of an inductor in parallel with a damping resistor. The inductor and resistor are calculated to form, together with a high voltage coupling capacitor, a second order high pass filter. Therefore, matching the range of the CIL with the size of the coupling capacitor with which it will be used is important.

CIT quadrupoles

The CIT coupling units are transformer type units, where a preamplifier's input resistance functions as the required damping resistor. CIT units offer a higher sensitivity than the CIL coupling units. Furthermore, CIT units are available for bridged configurations to connect to two similar test objects as well.

CIL/V and CIT/V quadrupoles

The CIL/V and CIT/V quadrupoles are similar to the CIL and CIT quadrupoles but also contain at least one built-in capacitor acting as a voltage divider together with the high voltage coupling capacitor. This provides a low-voltage copy of the applied high voltage wave that can be used to synchronise the PD detector and monitor the quality of the applied high voltage wave.



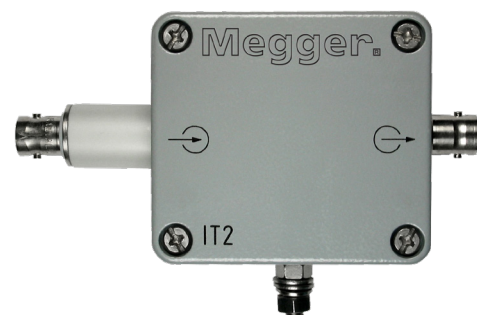
Assorted quadrupoles

Optionally, Megger quadrupoles can be equipped with multiple built-in divider capacitors for voltage measurement. Those quadrupoles have a rotary switch to select the required divider capacitor. Especially, when connected to the measurement tap of transformer bushings, the selectable capacitors expand the applicable voltage range.

Type	Coupling capacitor range	Max. AC Current
CIL1H	20 pF to 90 pF	50 mA
CIL2H	60 pF to 250 pF	100 mA
CIL3L	200 pF to 900 pF	50 mA
CIL3M	200 pF to 900 pF	200 mA
CIL3H	200 pF to 900 pF	500 mA
CIL4L	600 pF to 2.5 nF	100 mA
CIL4M	600 pF to 2.5 nF	400 mA
CIL4H	600 pF to 2.5 nF	1100 mA
CIL5L	2 nF to 9 nF	400 mA
CIL5M	2 nF to 9 nF	1600 mA
CIL5H	2 nF to 9 nF	3200 mA
CIL6L	6 nF to 25 nF	1000 mA
CIT4M	600 pF to 2.5 nF	400 mA
CIT4H	600 pF to 2.5 nF	1100 mA
CIT5M	2 nF to 9 nF	1600 mA
CIT5H	2 nF to 9 nF	3200 mA
CIT6M	6 nF to 25 nF	4000 mA
CIT6H	6 nF to 25 nF	8000 mA

ISOLATION TRANSFORMERS

The IT series allows the permanent isolation of 250 Volts between input and output. Its high frequency behaviour is optimised for 50 Ω systems and the use with a multiplexer and RPA2 or RPA2B type of preamplifier. An extra voltage output 'V' with the 50/60 Hz fundamental frequency is available on request.





PD accessories

Coupling capacitors

COUPLING CAPACITORS

Analysing the discharge activity requires the permanent installation of coupling devices. Preferably, such coupling devices are capacitive couplers terminated by a power separation filter.



Coupling capacitors for permanent installation

Megger's coupling capacitors for permanent installation are suitable for partial discharge testing and monitoring of high voltage assets such as:

- Medium voltage motors
- Turbine generators
- Hydro generators
- Distribution transformers

while the coupling capacitors for temporary installation are mainly used in laboratories and workshops for PD testing of:

- Rotating machines of various types
- Power transformers
- Medium voltage switchgears
- as well as for a variety of smaller test setups.

The built-in quadrupole of the couplers provides a PD signal and a superimposed AC component for synchronisation purposes.



Coupling capacitors for temporary installation

Type	Capacitance	Nominal voltage	Built-in quadrupole	Built-in voltage divider	Built-in RF CT
CC5B/V	2 nF	5 kV	■	■	
CC7B	440 pF	7 kV	■	■	
CC14B	220 pF	14 kV	■	■	
CC15B/V	2 nF	15 kV	■	■	
CC20B	145 pF	20 kV	■	■	
CC25B	1 nF	25 kV	■	■	
CC25B/V	1 nF	25 kV	■	■	
CC25C/V	1 nF	25 kV	■	■	■
CC35B/V	145 pF	35 kV	■	■	
CC50B/V	1 nF	50 kV	■	■	
CC50C/V	1 nF	50 kV	■	■	■
CC100B/V	1 nF	100 kV	■	■	
CC150B/V	1 nF	150 kV	■	■	
CC200B/V	0.5 nF	200 kV	■	■	
CC300B/V	0.5 nF	300 kV	■	■	

A wider range of coupling capacitors and capacitor assemblies completed by quadrupoles and preamplifiers is available on request. The table above lists some standard models of coupling capacitors provided by Megger, along with their built-in circuits, if present.

COUPLER TERMINATION BOXES

A coupler termination box is necessary for providing the protective ground for the coupler's BNC signal cable.

- Sturdy cast aluminium enclosure
- Output connectors protected by chained caps
- Built-in overvoltage protection



Type	Channels	Spark gap	IN	OUT
CTB1A	3	350 V	BNC	BNC
CTB1C	3	350 V	TNC	BNC
CTB2A	4	350 V	BNC	BNC
CTB2C	4	350 V	TNC	BNC

BUSHING COUPLING UNITS

The bushing coupling units are for permanent installation on power transformers. Together with a matching bushing adapter they serve to make different signals available for measurement and monitoring.

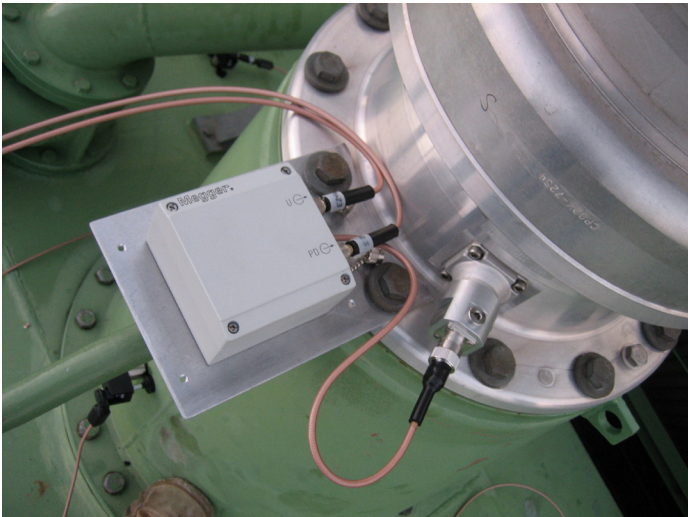
The bandwidth of the partial discharge signals extends to 20 MHz. The voltage signal of the built-in capacitive divider of Megger's bushing coupling units serves to synchronise the partial discharge acquisition and to measure the voltage. However, the excellent bandwidth of the voltage signal also allows transfer impedance measurements and loss factor measurements.

Megger offers two different models: BCU2C for the output of a PD and a voltage signal, and BCU2D for the output of a voltage signal and a PD signal with superimposed voltage signal. The voltage range and the bushing capacitances of the transformer determine the type of coupling units to be used.

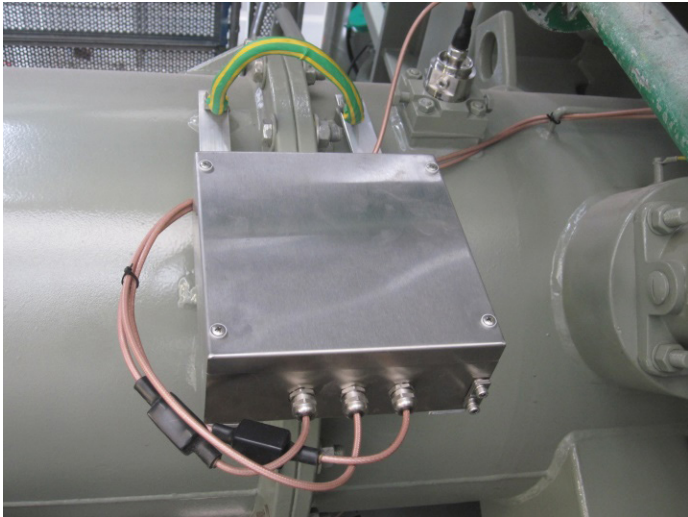
The bushing coupling unit comes in a IP66 protected enclosure with a PTFE insulated input cable. Thus, it is suitable for indoor and outdoor use. The voltage range and bushing capacitances (C1 and C2) have to be specified on order.



BCU2D



BCU installed on a transformer bushing



Stainless steel enclosure for offshore applications



PD accessories

Bushing accessories

BUSHING ADAPTERS

Analysing the discharge activity requires the installation of coupling devices, which preferably take the signals from the capacitive tap of the transformer bushings. Bushing adapters (BA), in combination with a matching bushing coupling unit, make different signals available for measurement and monitoring.

The voltage range and the bushing capacitances of the transformer determine the type of coupling units to be used. Megger offers a wide range of bushing adapters for bushings of many different manufacturers, such as Micafil, ABB, HSP, PCORE, Moser-Glaser, and Trench.

Every bushing adapter is equipped with two built-in surge arresters for overvoltage protection. Its robust housing made of anodised aluminium is dust tight and protected against water according to Ingress Protection class 66. For offshore applications a special stainless-steel enclosure is available.

Besides the standard adapters, other adapter models are available on request and will be custom made. For this, we need the dimensions of the bushing's test tap. We have created a document to help our customers determine the most important dimensions. Please [download it here](#) or contact us at support.pdix@megger.com for support. Megger will be happy to assist in determining a suitable adapter for a specific transformer bushing.



Download instructions
for test tap determination

Type	Thread	Size	Connector	Size	Dimensions	~ Weight
BA2	Inside	G3/4 in	Female	4 mm	49 x 44 x 64 mm ³	170 g
BA3	Outside	M45 x 2	Female	8 mm	75 x 65 x 118 mm ³	500 g
BA4 adapt.	Flange Inside	-- M76 x 1.5	Male	8 mm	80 x 70 x 103 mm ³	400 g
BA5	Inside	M24	Male	4 mm	44 x 41 x 79 mm ³	200 g
BA6	Outside	M38 x 1.5	Male	4 mm	44 x 41 x 80 mm ³	190 g
BA7C	Outside	2¼ in-12 UNF	Female	8 mm	80 x 77 x 104 mm ³	190 g
BA7D	Outside	2¼ in-12 UNF	Female	3.5 mm	80 x 77 x 104 mm ³	190 g
BA8	Inside	5/8 in-11 UNC	-	3 mm	32 x 30 x 70 mm ³	100 g
BA9	Outside	M30 x 1.5	Female	4 mm	50 x 50 x 60 mm ³	180 g
BA9B	Inside	M30 x 1.5	Female	8 mm	49 x 44 x 66 mm ³	180 g
BA10	Outside	M16 x 1.5	Female	4 mm	60 x 55 x 64 mm ³	120 g
BA10B	Outside	M16 x 1.5	Female	4 mm	34 x 34 x 64 mm ³	90 g
BA10C	Outside	M16 x 1.5	Female	4 mm	25 x 23 x 61 mm ³	60 g
BA11	Flange	--	Female	8 mm	95 x 85 x 100 mm ³	500 g

PD accessories Bushing accessories

Type	Thread	Size	Connector	Size	Dimensions	~ Weight
BA12	Outside	M30 x 2	Female	6 mm	44 x 40 x 63 mm ³	200 g
BA14	Outside	1 1/16 in-12 UN	Female	8 mm	47 x 45 x 100 mm ³	210 g
BA15	Outside	M30 x 2	Female	9 mm	47 x 45 x 102 mm ³	200 g
BA17	Outside	M30 x 2	Female	4 mm	43 x 40 x 60 mm ³	190 g
BA17B	Outside	M30 x 2	Female	4 mm	39.5 x 39.5 x 60 mm ³	190 g
BA18	Flange	--	Female	8 mm	41 x 72 x 127 mm ³	180 g
BA19	Flange	--	Female	8 mm	92 x 82 x 105 mm ³	500 g
BA21	Outside	M24 x 1.5	Female	4 mm	49 x 45 x 71 mm ³	180 g
BA21B	Outside	M24 x 1.5	Female	4 mm	49 x 45 x 71 mm ³	180 g
BA21C	Outside	M24 x 1.5	Female	4 mm	43 x 60 x 65 mm ³	180 g
BA23	Inside	M36 x 3	Female	5 mm	44 x 41 x 60 mm ³	180 g
BA25	Outside	1 ¼ in-12 UNF	Spring	5 mm	42x 40 x 59 mm ³	140 g
BA26	Outside	1 1/8 in-12 UNF	Female	1/4 in	45,5 x 44 x 63 mm ³	150 g
BA27	Outside	1 1/8 in-12 UNF	Female	8 mm	47 x 45 x 69 mm ³	150 g
BA28	Outside	¾ in-14 NPSM	Spring	9 mm	34 x 34 x 56 mm ³	80 g
BA29	Inside	M33 x 1.5	Female	4 mm	43 x 43 x 62 mm ³	180 g
BA30	Inside	M30 x 1.5	Female	6 mm	44 x 40 x 61 mm ³	150 g
BA31	Inside	4 x 6 holes, dist.: 44 mm	Female	10 mm	58 x 58 x 53 mm ³	100 g
BA32	Inside	M42 x 1.5	Female	6 mm	49 x 49 x 76 mm ³	200 g
BA33	Outside	M20 x 1.5	Male	5.3 mm	44 x 41 x 59 mm ³	150 g
BA34	Inside	M24 x 1.5	Female (adapter)	M6	43 x 40 x 91 mm ³	210 g
BA34B	Inside	M24 x 1,5	Female (adapter)	M6 to 4 mm	43 x 43 x 101 mm ³	210 g
BA35	Inside	M24 x 1	Female (adapter)	M6	43 x 40 x 93 mm ³	210 g
BA36	Outside	Ø 63.5-0.2 mm, pitch: 3 mm thread angle: 55 °	Female (adapter)	M6	75 x 75 x 107 mm ³	350 g
BA37	Inside	M24 x 2	Spring	5.5 mm	44 x 40 x 67 mm ³	180 g
BA38	Inside	G3/4 in	Female	3.6 mm	43 x 39 x 57 mm ³	150 g
BA40	Inside	M24 x 1.5	Female	2.8 mm	43 x 40 x 91 mm ³	350 g
BA41	Inside	M24 x 1.5	Female	3.3 mm	43 x 40 x 91 mm ³	350 g
BA42	Flange	--	Female	8 mm	68 x 68 x 72 mm ³	280 g
BA43	Inside	M38 x 1.5	Female (adapter)	4 mm	44 x 44 x 85 mm ³	200 g
BA45	Outside	1 in-10 UNS	Male	3 mm	45 x 45 x 58 mm ³	160 g
BA46	Inside	M29 x 1.5	Female (adapter)	5 mm to 4 mm	45 x 43 x 79 mm ³	200 g
BA49	Flange	--	Female	8 mm	67 x 67 x 72 mm ³	300 g

PD accessories

Pre-amplifiers and pre-acquisition units

PRE-AMPLIFIERS AND PRE-ACQUISITION UNITS

Megger provides a complete line of modular pre-amplifiers and pre-acquisition units for various testing applications. The most significant difference among the pre-amplifiers is the frequency range in which they detect partial discharge signals. Other features that distinguish one pre-amplifier from another are: options for transparency and on/off switching, unipolar vs. bipolar charge detection, and the possibility of galvanic isolation in the test setup.

All of Megger's external signal conditioning modules and pre-amplifiers are remote supplied and remote controlled through a simple coaxial signal cable (RG58). This technique allows placement of these units close to the sensor or signal source. Furthermore, as these modules act as impedance converter and line driver, the weak signal source, such as a voltage divider or coupling impedance, is not loaded by the cable capacitance or impedance.

This technique also provides enhanced overvoltage protection. All pre-amplifiers of the RPA series can drive a 50 W cable with a length of up to 50 m.

The RPA1 is the standard pre-amplifier for measurements in the low frequency range according to standards, such as the IEC 60270. The RPA1D, RPA1E, RPA1F, and RPA1G are variations on the RPA1.

The RPA1D and RPA1G are suited to connect directly to ultrasonic acoustic sensors. To simplify connection, they provide the selectable power supply for the sensor (15 V or 28 V DC).

The RPA1L and RPA1H are intended primarily for measurements on medium- and high voltage power cables using the ICMcompact.

The RPA2 is primarily for measuring the PD signal spectra found with rotating machines, while the RPA2B is used with capacitive sensors to monitor cables and cable accessories at a higher sensitivity.

The RPA3 module is well-suited for measuring PD signal spectra, detected by sensors and antennas installed with gas insulated switchgear (GIS).

The RPA4 is a pre-amplifier set with fibre optic transmission, offering outstanding isolation properties.

The frequency converter unit FCU2 is an ultra-wide band pre-acquisition unit, covering 100 to 1800 MHz. It has a logarithmic output and is mainly used for GIS applications.

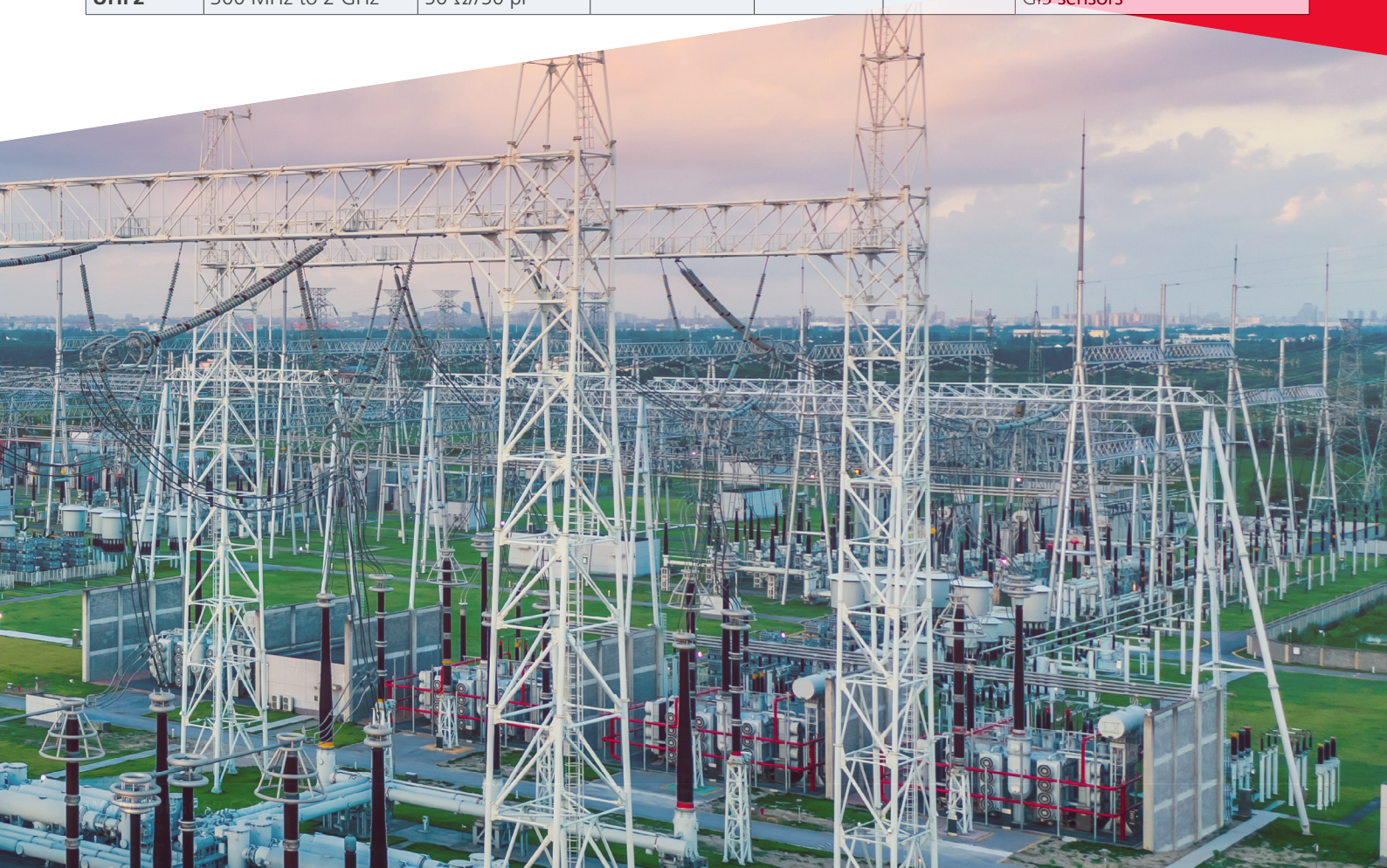
The UHF1 and UHF2 offer an amplification of 27 dB in the range from 200 MHz to 1 GHz resp. 300 MHz to 2 GHz, and are suitable for boosting weak signals from GIS sensors.



PD accessories

Preamplifiers and pre-acquisition units

Type	Frequency range	Input impedance	Sensitivity input	Roll-Off	Bipolar	Remarks
RPA1	40 kHz to 800 kHz	10 k Ω //50 pF	<200 μ V	40dB/dec	●	Standard preamplifier
RPA1D	40 kHz to 800 kHz	10 k Ω //50 pF	<200 μ V	40dB/dec	●	Built-in sensor supply, switchable (15/28 V)
RPA1E	40 kHz to 800 kHz	10 k Ω //50 pF	<200 μ V	40dB/dec	●	0/20 dB attenuation
RPA1F	40 kHz to 800 kHz	10 k Ω //50 pF	<200 μ V	40dB/dec	●	For the AIACompact only
RPA1G	40 kHz to 800 kHz	10 k Ω //50 pF	<200 μ V	40dB/dec	●	Built-in sensor supply, switchable (Off/15/28 V)
RPA1H	40 kHz to 20 MHz	1 k Ω //50 pF	<400 μ V	40dB/dec	●	Oil/paper cable, DSO
RPA1L	40 kHz to 20 MHz	1 k Ω //50 pF	<200 μ V	40dB/dec	●	Cable, DSO
RPA2	2 MHz to 20 MHz	50 Ω //50 pF	<800 μ V	40dB/dec		On-line measurements on rotating machines
RPA2B	2 MHz to 20 MHz	50 Ω //50 pF	<200 μ V	40dB/dec		Cable sensors
RPA3	200 MHz to 1 GHz	50 Ω //50 pF	<300 μ V	40dB/dec		GIS sensors
RPA3D	50 MHz to 400 MHz	50 Ω //50 pF	<300 μ V	40dB/dec		Nearfield detection
RPA3E	20 MHz to 200 MHz	50 Ω //50 pF	<300 μ V	40dB/dec		Nearfield detection
RPA4	40 kHz to 800 kHz	10 k Ω //50 pF	<200 μ V	40dB/dec	●	Fibre optic isolation
RPA4H	20 kHz to 5 MHz	10 k Ω //50 pF	<200 μ V	40 dB/dec	●	Fibre optic isolation
FCU2	100 MHz to 1.8 GHz	50 Ω //50 pF	<200 μ V	40dB/dec		Logarithmic output
FCU3	100 kHz to 50 MHz	50 Ω //50 pF	<200 μ V	40dB/dec		Logarithmic output, cable sensors
UHF1B	150 MHz to 1 GHz	50 Ω //50 pF	–	–		GIS sensors
UHF1C	300 MHz to 1 GHz	50 Ω //50 pF	–	–		GIS sensors
UHF2	300 MHz to 2 GHz	50 Ω //50 pF	–	–		GIS sensors



PD accessories

Current transformers

CURRENT TRANSFORMERS

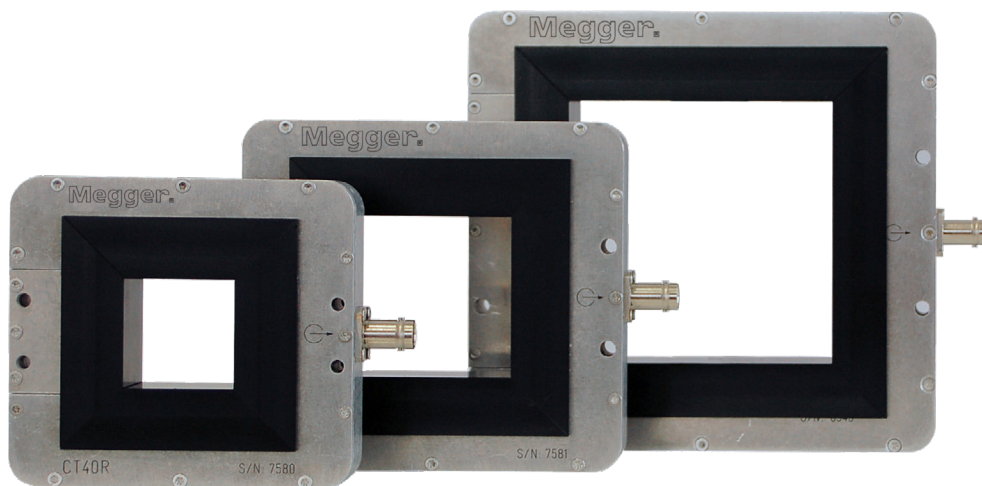
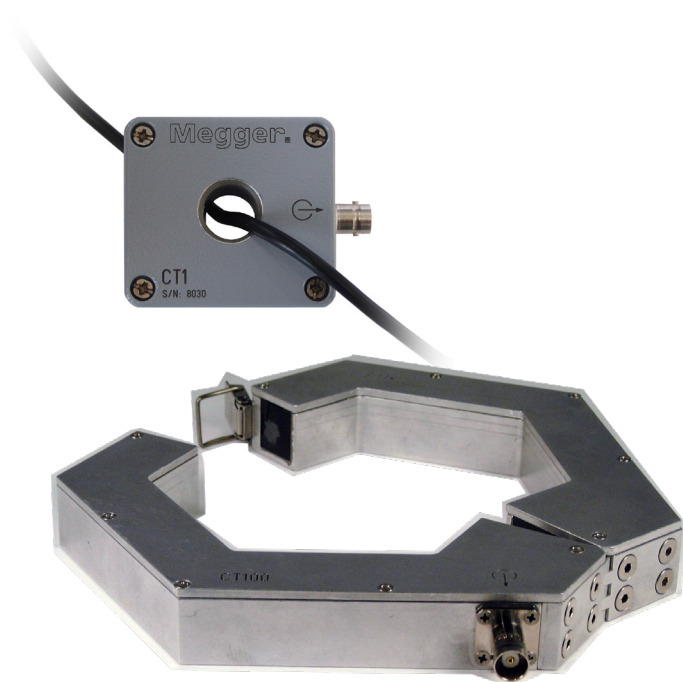
Current transformers (CT) are a low-impact option for sensing partial discharge pulses and sending them as voltage signals to a pre-amplifier or a pre-processing unit for conditioning. No interruption of the power connection is required. The installation of a CT is even possible under on-line conditions, since most of Megger's current transformers can be opened and reassembled or clamped around an already existing connection.

Providing a galvanic isolation between the PD detector or PD on-line monitoring system and the high voltage circuit a current transformer reduces the risk of unwanted damages on the sensitive measurement equipment.

Megger current transformers are versatile and suitable for many different test setups. They that can be used with:

- Connecting cables
- Cross link cable boxes
- Cross link box busbars
- Ground leads
- Medium voltage cables
- Coupling capacitor terminals

Type	Transf. ratio at 50 Ω	Primary window	Bandwidth at -3 dB	Bandwidth at -6 dB
CT1	1:10	15 mm	0.5 to 80 MHz	0.3 to 100 MHz
CT40R	1:10	40 mm	2 to 25 MHz	1.2 to 40 MHz
CT50/10	1:10	50x10 mm	2 to 90 MHz	1.7 to 93 MHz
CT60R	1:10	60 mm	2 to 25 MHz	1.2 to 40 MHz
CT100(R)	1:10	100 mm	2 to 25 MHz	1.2 to 40 MHz
CT125R	1:10	125 mm	2 to 25 MHz	1.2 to 40 MHz
CT150R	1:10	150 mm	2 to 25 MHz	1.2 to 40 MHz



Current transformers of the CTR series

HV FILTERS

Partial discharge measurements are conducted in frequency ranges, which are partly covered by radio transmission. Further, impulse noise interference hamper sensitive measurements. Besides using small filters in the acquisition chain, power filters allow removing such disturbance from the high voltage supply. Megger offers a range of different high voltage filters.

Pi-Filters are for three-phase systems up to 2 kV, whereas the single-phase T-filters are used for testing with higher voltages. Those filters are installed in-line between voltage source and

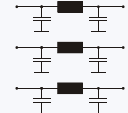
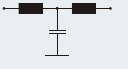
device under test.

The typical frequency range of Megger HV filters is 0 to 300 Hz. For a short time they can be operated with frequencies up to 400 Hz.

For gating purposes, filters that are used in combination with an ICMflex can be equipped with a high frequency current transformer (HF CT) and a BNC output.



Filter T100/100

Type	Name	$U_{N,rms}$	$I_{N,rms}$	Size in mm (W x H x D)
3π-Filters 	3PI1/20	1 kV	20 A	400 x 170 x 460
	3PI1/50	1 kV	50 A	400 x 170 x 460
	3PI2/20	2 kV	20 A	400 x 170 x 460
T-Filters 	T30/1	30 kV	1 A	357 x 620 x 350
	T30/5	30 kV	5 A	357 x 620 x 350
	T30/20	30 kV	20 A	357 x 620 x 350
	T30/100	30 kV	100 A	507 x 620 x 350
	T50/1	50 kV	1 A	357 x 800 x 350
	T50/5	50 kV	5 A	357 x 800 x 350
	T50/20	50 kV	20 A	357 x 800 x 350
	T50/100	50 kV	100 A	507 x 800 x 450
	T100/1	100 kV	1 A	357 x 1000 x 350
	T100/5	100 kV	5 A	357 x 1000 x 350
	T100/20	100 kV	20 A	357 x 1000 x 350
T100/100	100 kV	100 A	507 x 1000 x 450	

HV filters of different ratings (U_N , I_N) are available on request.

GROUND FILTER

Partial discharge (PD) measurement requires a reasonable noise-free environment. Megger's GF50 filter box is designed to reduce high frequent disturbance signals from the ground leads. It can be used for HF separation of the test specimen from the ground potential of the power supply or other HV equipment within the environment without influencing the power frequency. The efficiency strongly depends on the general earthing within the laboratory. A splitted ground lead or copper band can be connected to the multi contact connectors or alternatively to the wing screws beside.



FILTER MODELS FOR SPECIAL APPLICATIONS

Besides the standard HV filters, Megger offers various filters for special high voltage applications, including line filters for cable testing (such as the LF15 and LF350) and filters with AC current and AC voltage measurement.

With the latter a high voltage filter is combined with a high voltage divider and a high current transformer in one unit; conventionally on rolls, or upside-down, as shown.



PD accessories

Miscellaneous

DISTURBANCE ANTENNAS

The disturbance antenna DA1 can be used to pick up noise signals caused by local corona discharge, or AM radio waves for instance. Its magnetic holder allows a flexible placement on a transformer tank or to other metallic parts close to the object under test. The output signal can be used to trigger the gate input circuit of all PD acquisition or monitoring devices.

The wideband antenna DA2 consists of a UHF antenna and a frequency converter unit. It is designed to filter HF signals, e.g., emitted by GSM transmitting antennas. Therefore it is especially used for GIS monitoring.



DA2 disturbance antenna

DISCHARGE RADIATION ANTENNA

With its built-in wide band logarithmic amplifier this antenna is suitable for the detection of discharge signals on air insulated switchgear (AIS) cabinets. It consists of a VHF antenna and a magnetic holder for simple fixture on visual inspection holes on metal housings.

GATE SIGNAL TRANSMITTER

The gate signal transmitter GST1 converts TTL or analogue gate signals into a fibre optic TTL output signal. It has a logarithmic amplification and can be set to three different frequency ranges (40 to 800 kHz, 2 to 20 MHz, or 200 to 600 MHz), which can be selected with a push button. The active bandwidth mode is marked by a lit green LED. The trigger level can be adjusted by a rotary knob, while an LED bargraph indicates the actual signal strength.

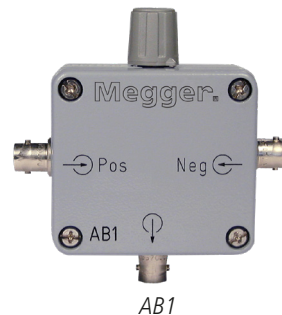


ACTIVE BRIDGE ADAPTER

The active bridge adapter is an optional accessory that can be used in certain circumstances to 'subtract' noise from the measurement setup.

The active bridge adapter AB1 serves to balance the signal picked up by two pre-amplifiers to reduce the common mode noise or disturbance. This method is applicable when two branches are available.

A mismatch of the signal strength can be adjusted with the AB1's control knob. With the pre-amplifiers of the two branches connected to the 'Pos' and 'Neg' input of the AB1, and the output connected to the AMP IN of the PD detector, the control knob is used to minimise the common mode signal.



SIGNAL COMBINER

The CSC1 allows to select or combine signals from four BNC inputs to one BNC output. The input and output impedance is thereby kept to 50 Ω , even if one channel is selected or if the sum of all four channels is selected.



Get detailed information on PD accessories with our separate

TRANSPORTATION CASES FOR INSTRUMENTS OF THE ICM SERIES

All instruments of the ICM series can be delivered with a solid transport case made of high performance plastic compound with customised cut-out foam. It allows for the safe handling and transportation of one instrument and its accessories.

The cases are water and dust tight according to Ingres protection class IP 67.



INPUT PROTECTION UNITS

The protection units are designed to avoid damage of spectrum analyser input circuits or of pre-amplifier input stages under the presence of strong transient signals.

They are available for indoor application (IP52 protection) and for outdoor use (IP65 protection).

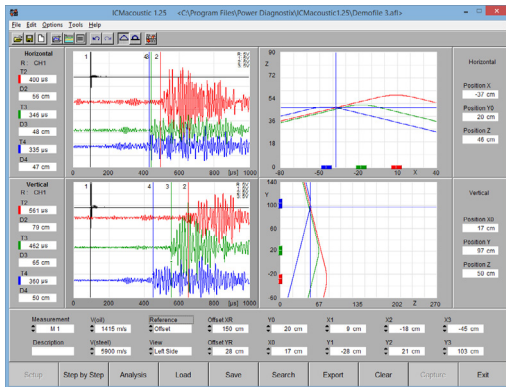


Megger's range of rate accessories catalogue.

PD accessories Special software

ICMacoustic

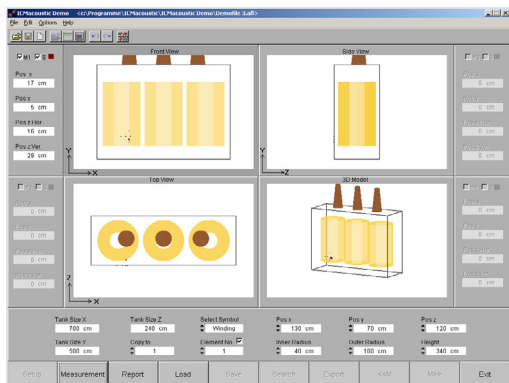
For PD location purposes the ICMacoustic software offers simple and full control of the FOsystem FOS4 or an oscilloscope of the Tektronix 20xx family. The software provides a virtual instrument to run the FOS4 or the oscilloscope under Windows 7, 8, and 10 (32-bit). Critical frequencies can easily be detected, and filters can be set for in-depth analysis.



ICMacoustic measurement panel

Contained functions are:

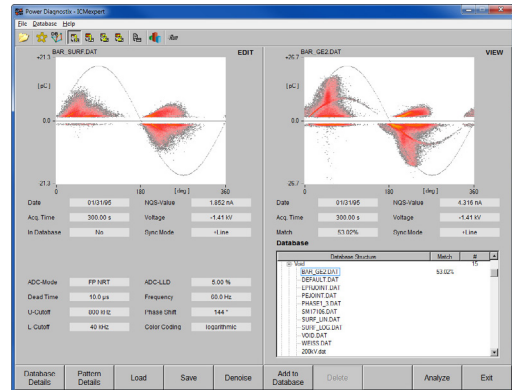
- Simultaneous display of up to 12 channels of the FOS4
- Accurate fault location by triangulation with freely configurable parameters for the different propagation velocities in oil and steel
- Screenshot functions
- Analysis and visualisation of measurement results through customizable 3D models
- Extensive report and export functions for measuring results and graphical representation of the fault location
- Convenient step-by-step wizard during the measurement



ICMacoustic analysis panel

ICMexpert

ICMexpert is a database software for managing partial discharge (PD) patterns and extends the possibilities of Megger programs like ICMcompact, ICMmonitor, ICMsystem, HVpilot, ICMflex, and GISmonitor. This easy-to-use tool offers functions for three main tasks occurring regularly when doing PD measurements:

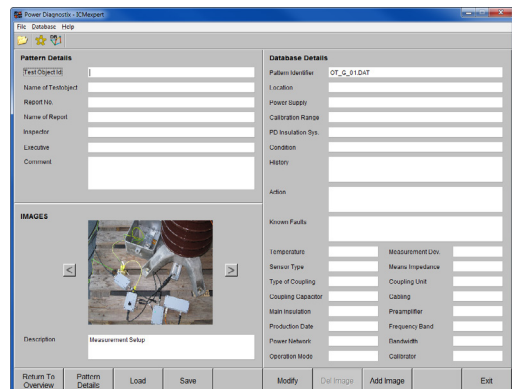


ICMexpert database overview panel

- Classification of pattern according to their PD fault(s)
- Pattern editing to correct deficiencies of the set-up, erase disturbances, and highlighting pattern regions characterizing typical PD faults
- Adding and maintaining additional information to recorded pattern

For each of these tasks ICMexpert provides a separate software panel.

The database structure is customizable according to different applications and user requirements. Additionally, the ICMexpert software supports the export of complete clones or parts of the database. Clones can be used to operate with the same database structure on different computers staying compatible with each of the used database files.



ICMexpert database details panel

Our knowledge for your benefit

Megger provides various services, such as on-site measurements, commissioning tests, DAkkS calibration of instruments, installation of couplers and monitoring systems, as well as rental of test equipment. Additionally, Megger acts as a consultant to analyse defect mechanism or to improve high voltage insulation systems, for instance.

CONSULTING

Megger assists to analyse encountered defects, failure mechanism, and helps to improve insulation systems. Further, support is provided to implement monitoring systems and to integrate embedded partial discharge sensors into insulation systems. Additionally, Megger offers interpretation service for partial discharge pattern acquired by local testing groups. Instruments equipped with modem or our mobile web server MWS also allow Megger having remote access for performing measurements and diagnosis.

ON-SITE MEASUREMENTS

Megger engineers are available on short notice for on-site partial discharge measurements. Such on-site measurements cover on-line and off-line diagnostics on rotating machines including large motors, partial discharge mapping on cable systems, survey-type measurements on gas-insulated substation equipment, and partial discharge acceptance testing and PD location on large transmission-class power transformers. All required instruments are provided, of course. VLF sources and smaller high voltage sources can be provided as well. However, rental of larger test sets needs to be subcontracted.



CALIBRATION SERVICE

Power Diagnostix, which is a Megger company, operates a calibration laboratory, which has received the accreditation within the German Calibration Service DKD by 2003. The audit according to ISO 17025:2018 was held by 'Physikalisch Technische Bundesanstalt' (PTB), the German authority of standards. In January 2012, Power Diagnostix passed to the newly introduced German accreditation authority DAkkS (DAkkS = Deutsche Akkreditierungsstelle). Power Diagnostix's new accreditation is filed under D-K-15068-01-00. The accreditation covers impulse charge (pC), voltages, and timing parameters, as well as on-site calibration of voltages up to 100 kV AC.

The DAkkS calibration service is of course also available for instruments and calibrators of other vendors.



HV labs at our facilities in Aachen

SEMINARS AND TRAINING

Standard shop-floor partial discharge testing is a comparable easy task. However, applying in-depth partial discharge diagnostics requires knowledge and experience. Here, Megger assists with training sessions for testing and engineering personnel and with seminars for larger service groups. Besides the mere installation and usage of the instruments, emphasis is put on understanding the theoretical background of partial discharge pattern, defect mechanism, and the interpretation of measurement results.

INSTALLATION SERVICE

Especially for monitoring systems a complete installation service is offered. Typically, this installation of couplers and instruments include the calibration of the entire setup and the base-line measurement.



Megger

Power Diagnostix Systems GmbH
Vaalser Strasse 250
52074 Aachen, Germany

www.megger.com

PDIX_CatalogueM_EN_v25

The word 'Megger' is a registered trademark. Copyright © 2025

Megger[®]