

## VLF SINE SERIES

Commissioning testing and condition analysis of medium voltage cables

**Megger**<sup>®</sup>

Experience unmatched efficiency with the lightest, fully integrated MV cable test & diagnostics systems in the world

Touchscreen operation with an outstanding user interface



## A powerful performance that you can take anywhere

### An all-in-one solution for MV cable test and diagnostics

The Megger VLF SINE products are the most powerful yet portable units in their class, with market-leading maximum testable load making reliable testing and diagnostics of short and long cables effortless.

Each of the VLF SINE products provides comprehensive testing options, including cable withstand testing, partial discharge measurement, integrated Tan Delta (TD) measurement, sheath testing and fault pinpointing – making them an all-in-one solution for medium voltage cable assessments.



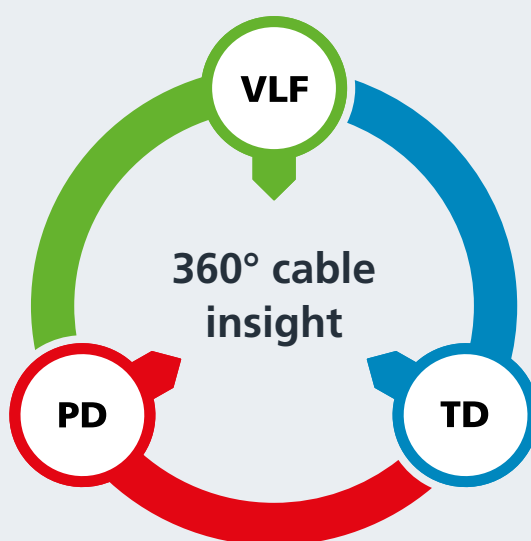
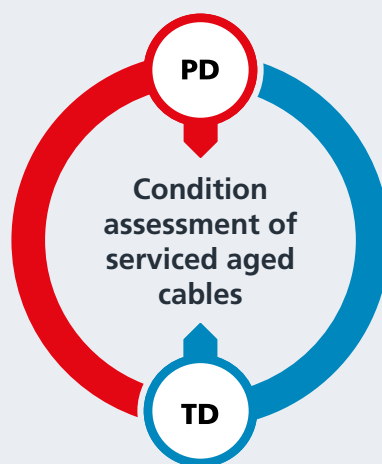
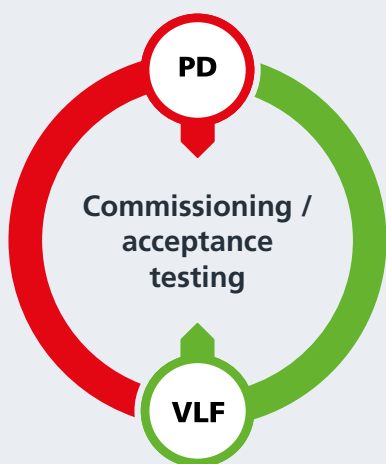
Only 44 kg  
(29 kg + 15 kg)

- Oversheath test
- Voltage withstand test
- Tan Delta (TD) test
- Partial discharge (PD) test

## Having all tools available

Modern complete commissioning tests consist of an oversheath test, a voltage withstand test and a partial discharge (PD) test. These functionalities can all be performed using the combination of VLF SINE products and lightweight PD coupler PDS 62-SIN or PDS 60-V3.

For utilities that want a complete 360° overview of the condition of their aged medium voltage network, a dielectric loss measurement Tan Delta (TD) is required. Tan Delta helps detect insulation aging early. The Megger VLF SINE series makes this process effortless, with built-in Tan Delta measurement and fully automatic data interpretation according to the latest IEEE 400.2.

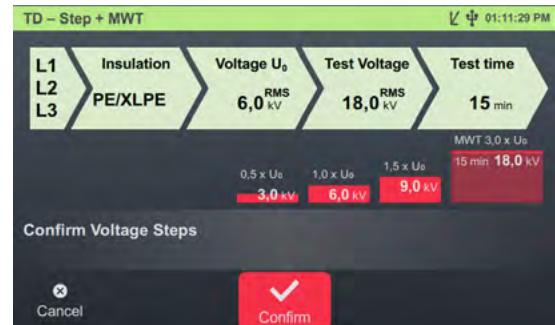


# Unmatched user experience for seamless operation

## Intuitive interface for easy operation

Enjoy streamlined operation with a large, vibrant colour touchscreen that delivers intuitive control and seamless navigation – making even complex testing tasks simpler and more efficient.

The touch-enabled user interface is designed for quick setup and smooth operation. Even advanced diagnostic procedures can be performed with minimal training – making the VLF SINE series a time-saving asset for both routine and in-depth tasks.



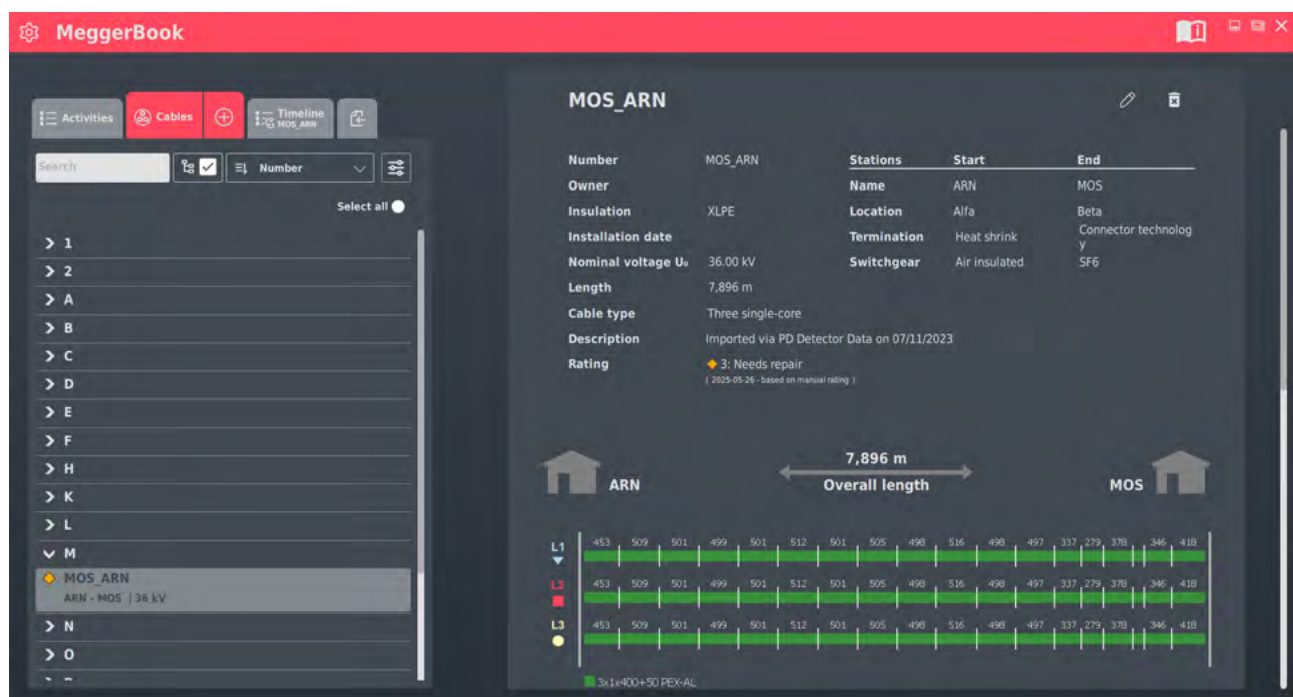
## Built-in data management

All test results are automatically analysed and stored on the unit's large internal memory – no external PC required. Operators can easily:

- Review results directly on the device
- Export data via USB, or soon via wireless transfer to a mobile device
- Compare historical measurements, such as year-on-year test data

## MeggerBook Lite

All VLF SINE series use MeggerBook Lite, Megger's latest data archiving and reporting software. It offers powerful functionality for data analysis and is available to users free of charge.





## Voice of customer

”

*The GUI of the VLF SINE series is truly excellent – incredibly user-friendly and intuitive. Thanks to its clear, step-by-step guidance, we can fully train new operators in just one session. This simplicity not only makes daily operation much easier but also significantly reduces our training time and effort. It's a real game-changer for us.*

Name: Alexis Vera      Job position: Site Supervisor      Company: Fusion Electrica Global

“

”

*The VLF SINE series simplifies operation, reduces training time, and helps our teams focus on getting accurate results – not worrying about mistakes.*

Name: Gonzalo Reyna Esparza      Company: CIGSA

“

”

*The user-friendly interface supports us in our daily work. The automated procedures make operations faster, easier, and safer by minimizing the risk of operator errors. Training new staff takes less time, which is a significant advantage for the company.*

Name: Angel Moya Olivares      Job position: Business representative      Company: Construcciones Electricas Moya

“



## Feel the difference, enjoy the comfort

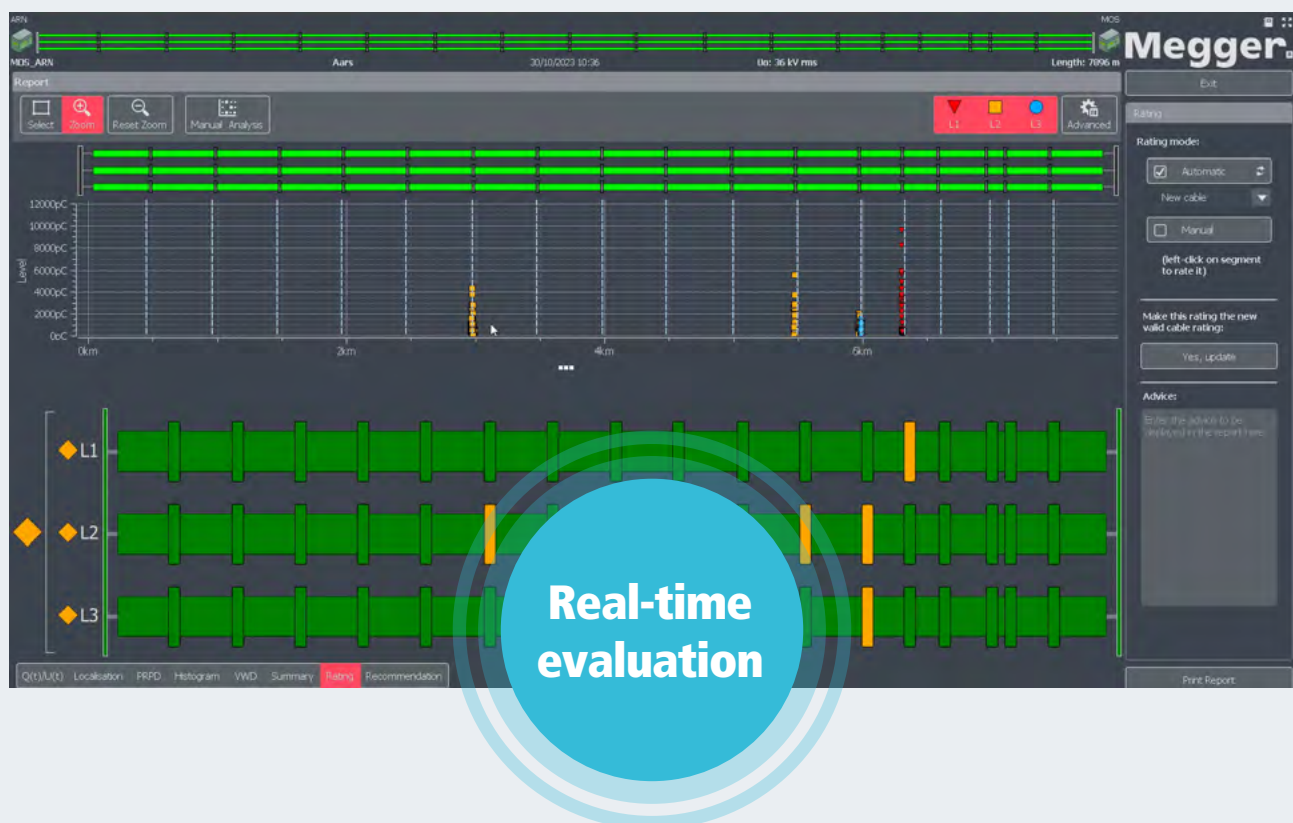
Operating the VLF SINE series is smooth and intuitive – not just for testing, but also for advanced diagnostic measurements. Whether you're using the built-in Tan Delta function or performing partial discharge diagnostics with an external coupler, the system ensures a seamless user experience.

The internal Tan Delta measurement offers automatic data interpretation and a clear, structured presentation of results, giving immediate insight into cable ageing parameters. You see the condition of your cable, clearly and in real-time.

Partial discharge testing is just as user-friendly. Tests can be configured as custom routines with full step-by-step guidance, and all data is automatically saved – **no risk of losing critical information**. Real-time evaluation during the test gives immediate insight into the condition of the cable, helping you make informed decisions on the spot.

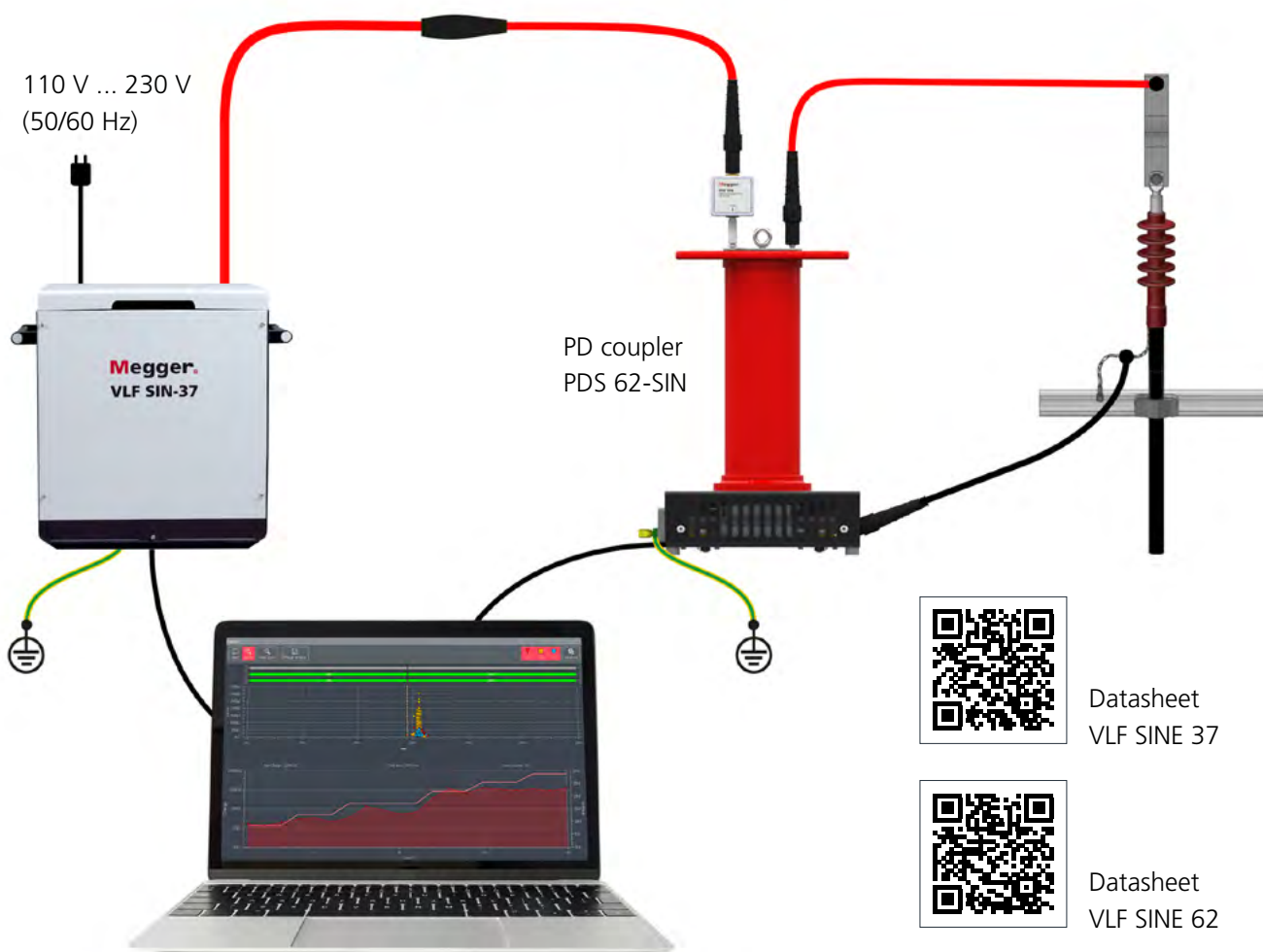
For even deeper analysis, the optional PD evaluation software package automatically interprets test results using pre-defined, user-adjustable thresholds. Whether testing new or aged cable segments, the software provides reliable trending and clear visual feedback.

With these intelligent features, Megger has achieved what others strive for: making complex diagnostics simple and accessible. That's the difference you can feel – and the comfort you can rely on.





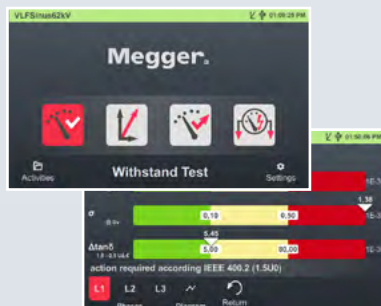
**Very easy  
to handle**



## Discover the full VLF SINE series portfolio

System	VLF SINE 37	VLF SINE 45	VLF SINE 62
<b>Cable rated voltage</b> Standard conform testing (3 U <sub>0</sub> ) Cable diagnostics (1,5 U <sub>0</sub> )	U <sub>0</sub> / U (Um) 8.7 / 15 kV (17.5 kV) 12 / 20 kV (24 kV)	U <sub>0</sub> / U (Um) 8.7 / 15 kV (17.5 kV) 18 / 30 kV (36 kV)	U <sub>0</sub> / U (Um) 12 / 20 kV (24 kV) 26 / 45 kV (52 kV)
<b>Tan Delta</b>	internal	internal	internal
<b>Testable capacity @ 0.1 Hz and maximum test voltage</b>	1.6 µF	0.6 µF	1.0 µF
<b>PD diagnostics</b>	with PDS 62-SIN	with PDS 62-SIN	with PDS 62-SIN
<b>Weight</b> VLF VLF + TD VLF + TD + PD (coupler)	29 kg 29 kg 44 kg	50 kg 50 kg 65 kg	60 kg 60 kg 75 kg
<b>Touchscreen operation</b>	YES	YES	YES

Want to see the software in action?



Ask for a free guided demo – no obligations.



Megger Germany GmbH · Dr.-Herbert-Iann-Str. 6 · D-96148 Baunach  
Tel. +49 (9544) - 680 · Fax +49 (9544) - 2273  
team.international@megger.com  
**www.megger.com**

The information in this document is subject to change without notice and should not be construed as a commitment by Megger Germany. Megger Germany assumes no responsibility for any errors that may appear in this document.

[VLF-SINE-SERIES\\_BR\\_EN\\_V01.pdf](#)

The word 'Megger' is a registered trademark. Copyright © 2025

**Megger**<sup>®</sup>